

We speak carpet tile!



MIFLOR

We speak carpet tile!



Sunglow-01



Sunglow-01+04+05

Start with
MOOIFLOR ...
... and lead
a more creative,
productive life.







HCHO
HCHO
吸收
Ecover
分解

清洁空气
clean air

Ecover® 净甲醛功能性地毯

与美国陶氏化学合作研发技术，
高效除醛科技，吸收+分解双管齐下
专利号：ZL 2017 2 0386260.6



详细视频，请扫描二维码



Sunglow-01+02+03

MOOIFLOR



Sunglow-01+04



Sunglow-09



Sunglow-01+08

Creativity
is more than
just being different.
Making
the simple,
awesomely simple,
that's creativity.



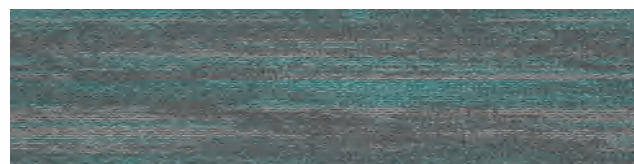
Sunglow-01



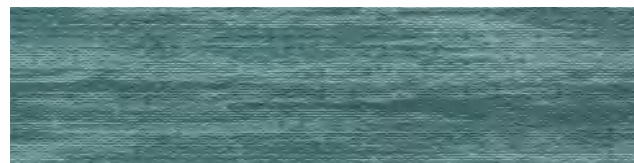
Sunglow-01+02+03



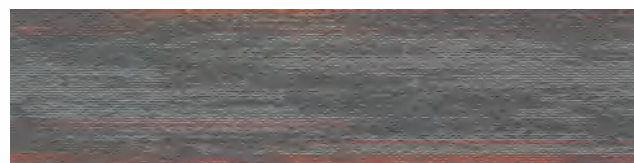
SUNGLOW SERIES
云端



Sunglow-02



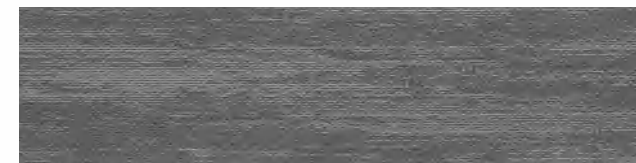
Sunglow-03



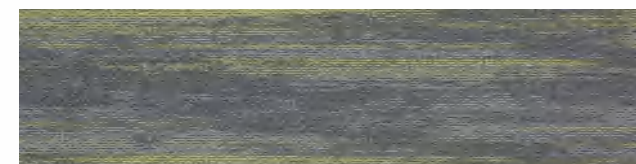
Sunglow-06



Sunglow-07



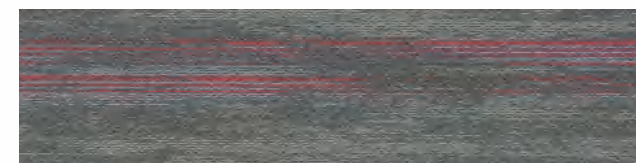
Sunglow-01



Sunglow-04



Sunglow-05

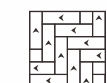


Sunglow-08



Sunglow-09

INSTALLATION METHODS



Herringbone



Ashlar



Monolithic



Brick

Style Name:	Sunglow
Construction:	Multi-level loop
Yarn:	Universal Nylon6
Color System:	100% Solution Dyed
Gauge:	1/12
Stitches:	11 per inch
Pile Weight:	17 oz/yd ²
Pile Height:	2.8mm-5.0mm(±0.5mm)
Backing:	PVC with fiberglass
Tile Size:	25cm×100cm
Area of Use:	Heavy Commercial
Flammability:	Passes (ASTME648-10) Class I Passes (GB 8624-2012) B1
Smoke Density:	Passes ASTM E 662 Less than 450
Static Propensity:	Passes AATCC-134 ≤3.5kV
Static Control:	Life-of-the carpet Static Protection
Formaldehyde Purification:	Passes (JC/T 1074-2008) Class I



Sunglow-01+06+07