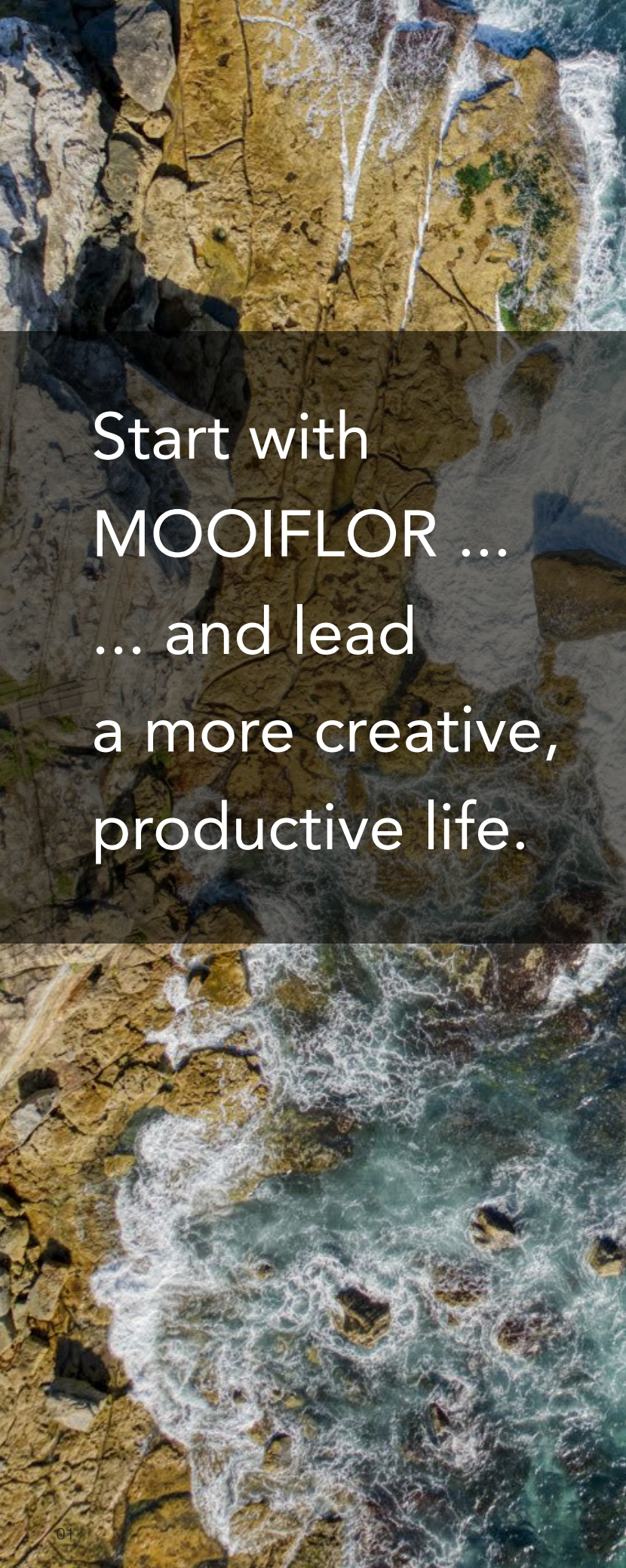


We speak carpet tile!



MIFLOR

We speak carpet tile!



Start with
MOOIFLOR ...
... and lead
a more creative,
productive life.



Shoal 1+3

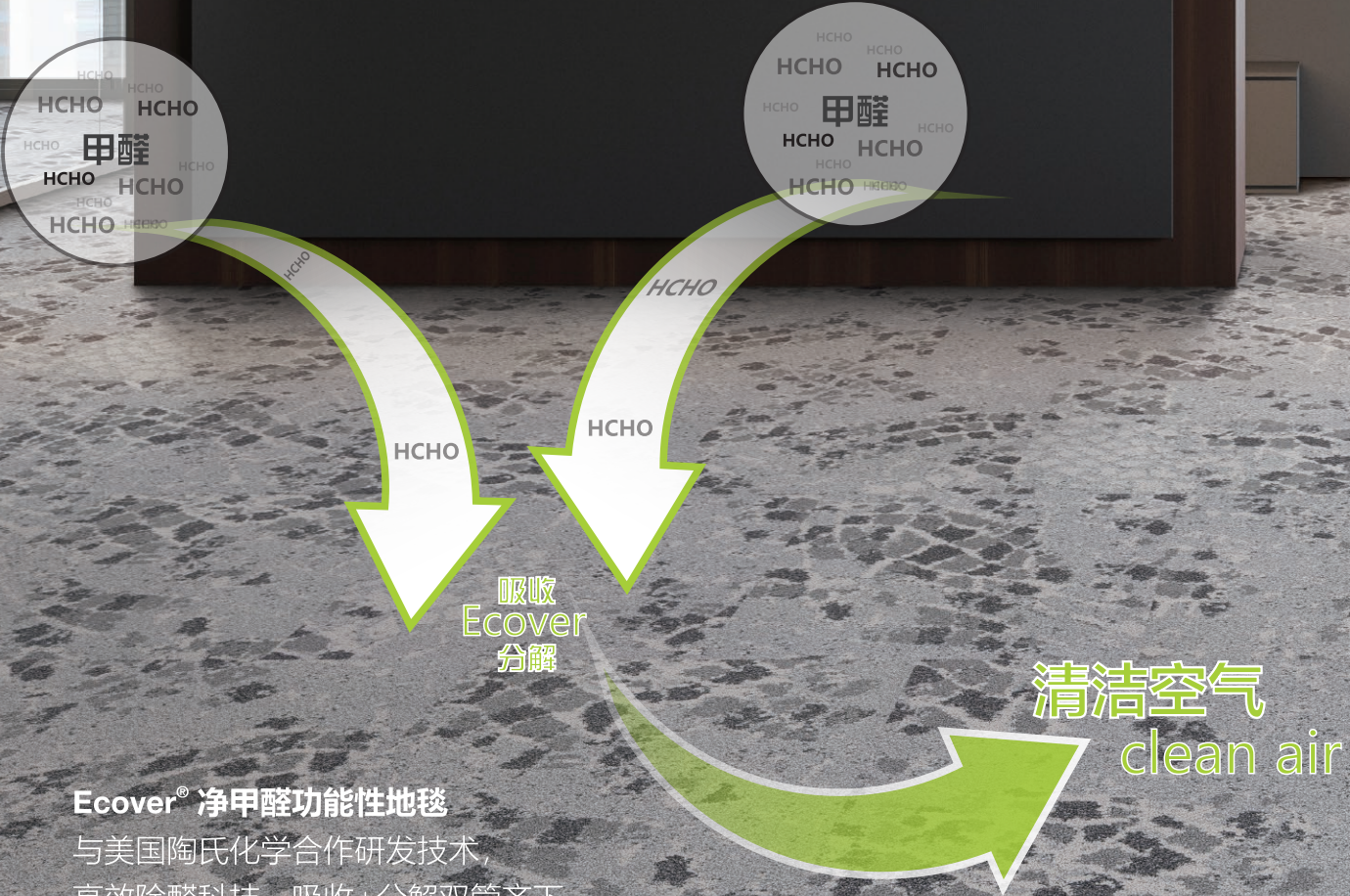
MOOIFLOR



Shoal 3 



Shoal 2 



Ecover® 净甲醛功能性地毯
 与美国陶氏化学合作研发技术，
 高效除醛科技，吸收+分解双管齐下
 专利号：ZL 2017 2 0386260.6



详细视频，请扫描二维码

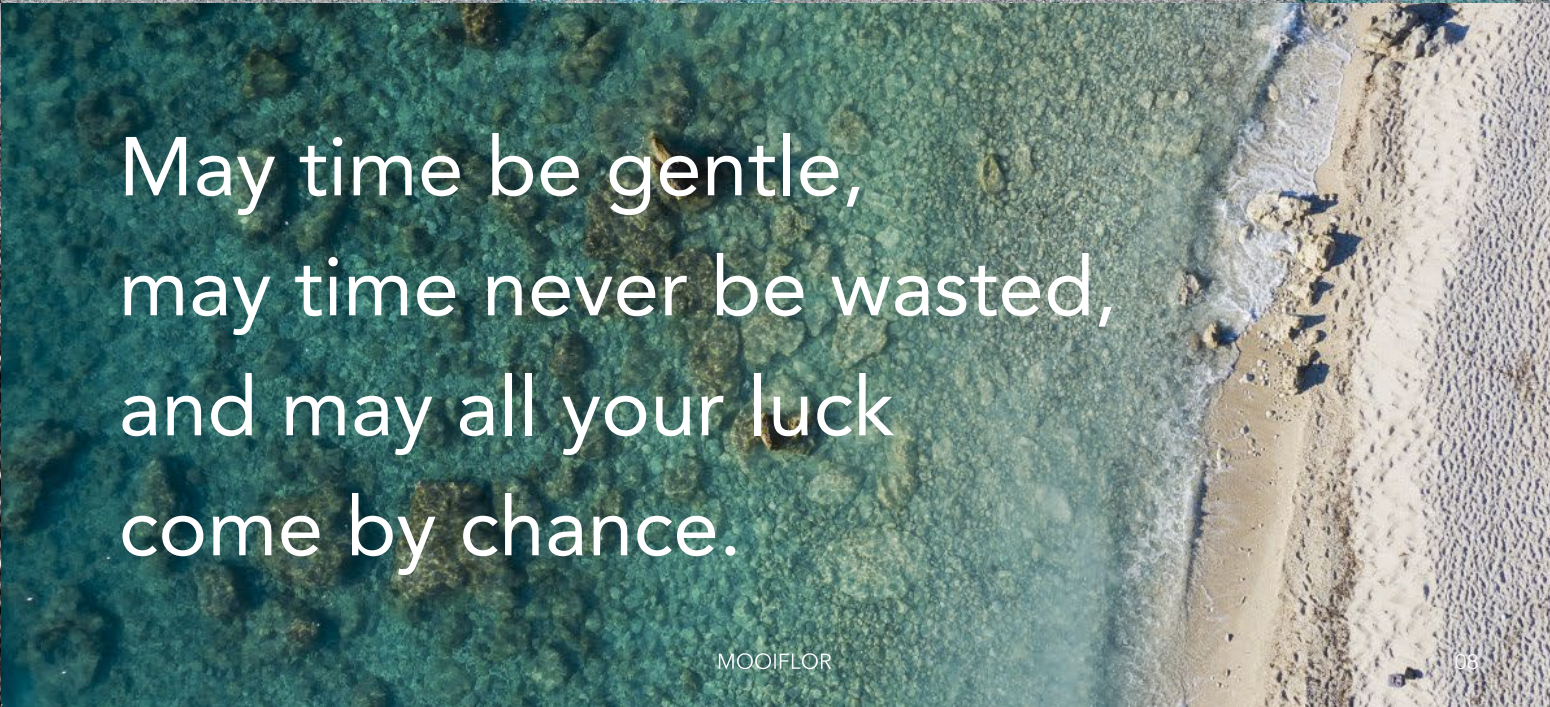




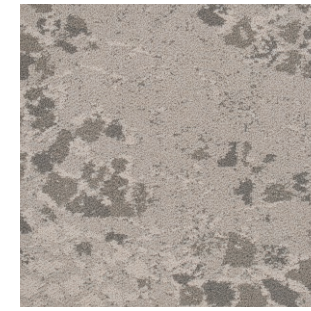
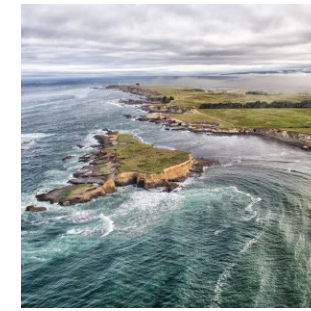
Shoal 9 



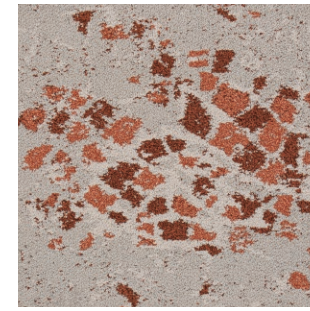
 Shoal 5



May time be gentle,
may time never be wasted,
and may all your luck
come by chance.



Shoal 1

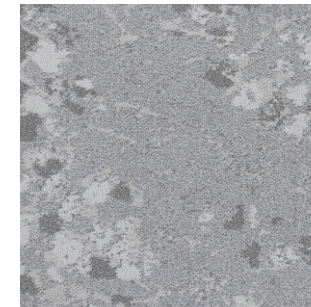


Shoal 2

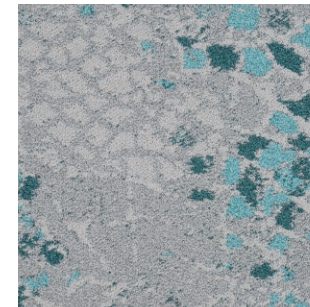


Shoal 3

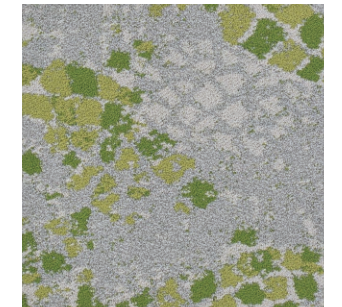
岩屿
SHOAL
SERIES



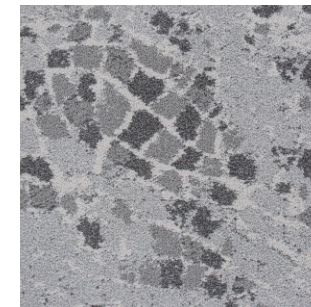
Shoal 4



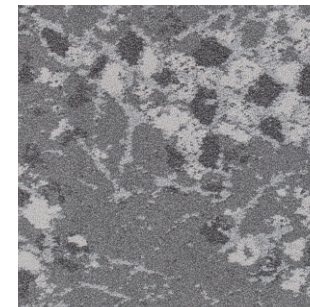
Shoal 5



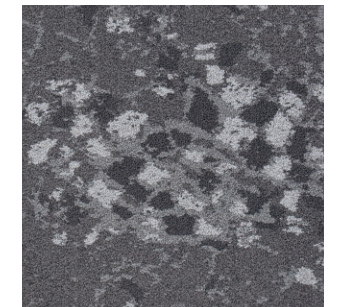
Shoal 6



Shoal 7

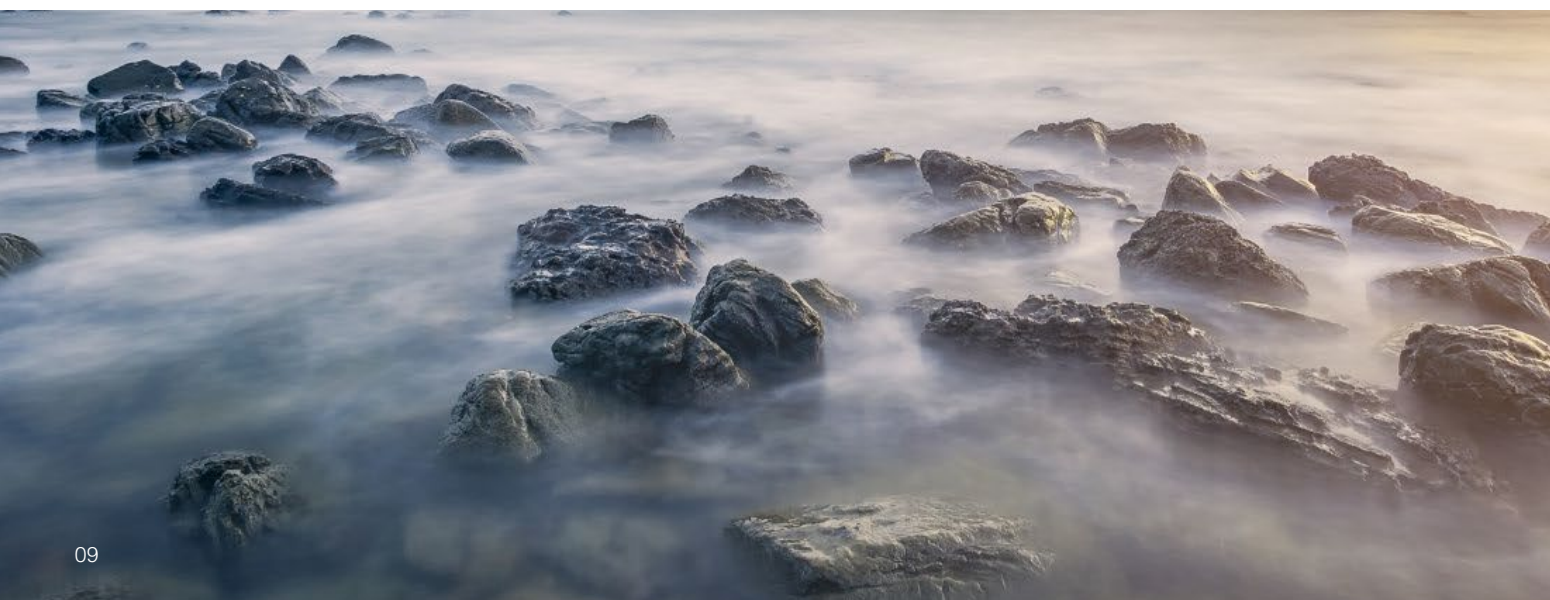


Shoal 8

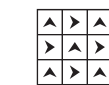


Shoal 9

Shoal 4+5+6



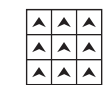
INSTALLATION METHODS



Quarter Turn



Ashlar



Monolithic



Brick



Declare. Ecover®



Style Name:	岩屿/Shoal
Construction:	Multi-level loop
Yarn:	Universal Nylon6
Color System:	100% Solution Dyed
Gauge:	1/10
Stitches:	8 per inch
Pile Weight:	30 oz/yd ²
Pile Height:	5.0mm-8.0 mm (±0.5mm)
Backing:	UltraEco Pro
Tile Size:	60cm×60cm
Area of Use:	Heavy Commercial
Flammability:	Passes (ASTM E 648-17) Class I Passes (GB 8624-2012) B ₁
Smoke Density:	Passes ASTM E662 Less than 450
Static Propensity:	Passes AATCC-134≤3.5kV
Static Control:	Life-of-the carpet Static Protection
Formaldehyde Purification:	Passes (JC/T 1074-2008) Class I