

PROJECT FLOORS



Before you start installation of Hybrid SPC please thoroughly read these Owner/Purchaser/Installer Responsibilities and Installation Instructions:

By starting the installation of Hybrid SPC, you are agreeing that you have read and understood all Owner/Purchaser/Installer requirements and responsibilities, and are aware that deviating from the instructions and recommendations in this installation guide may result in voiding the product's warranty.

- It is the sole responsibility of the Owner/Purchaser/Installer, prior to installation, to verify that the area/environment planned for installation is suitable for Project Floors and meets all local building codes and that all subflooring is dry, sound, flat and clean and meets or exceeds all industry standards; as well as the recommendations listed herein. The manufacturer and distributor accept no responsibility for product failure extending from or related to failure to meet job area/environment and subflooring requirements.
- The Owner/Purchaser/Installer assumes full responsibility for the final inspection of this product. Inspection should be done prior to installation and should include: colour, factory finish, milling and/or locking system damages. If the product is not acceptable, **DO NOT** install it. Contact your supplier immediately for assistance. This Project Floors warranty **DOES NOT** cover materials with visible defects after they are installed.
- This product may be installed over a radiant heating system, the system **must** be an imbedded type (circulating or electric) and be a minimum of ½" (12mm) below the subfloor installation surface and **never** in direct contact with the Project Flooring. Temperature must never exceed 40°C and changes in temperature settings must be gradual. It is the responsibility of the Owner/Purchaser/Installer to confirm the suitability of the radiant heating system for use with this product. The selection and use of any radiant heating system is the choice and sole responsibility of the Owner/Purchaser/Installer.
- Certain condominium and other multi-unit type building associations and/or owners may have floor covering acoustic performance requirements that may exceed the acoustic performance levels of this product, thereby requiring that a supplemental acoustical underlayment is required. If required by your condo association, this product may be installed over a supplemental layer of 3mm or 6mm acoustic cork underlayment. When installing this product in condominiums or other multi-unit type buildings, it is the sole responsibility of the Owner/Purchaser/Installer to ascertain if this product meets their acoustic performance requirements prior to its installation.

INSTALLATION TOOL AND ACCESSORY REQUIREMENTS:

Before starting to install your Project Floor, ensure you have all the necessary and correct tools, equipment and accessories, including:

- Work gloves
- Rubber mallet
- Straight edge or ruler
- Safety glasses
- 10mm (3/8") spacers
- Saw (miter, chop, hand, circular, or jig type)
- Broom and dust pan
- Tape measure
- Pencil
- Tapping block
- Chalk-line & chalk (string-line)
- Utility knife & sharp blades
- Possibly Primer: either Polymer 6000 primer or Universal primer

Before you start the installation of your Project Floors flooring you must do the following:

- When calculating flooring square footage requirements, allow for 5% to 10% for waste, cuts, future needs and replacements. If installing a diagonal, formal or other special pattern or smaller rooms, allow for 10% to 20% additional materials.
- Hybrid SPC may be installed virtually anywhere in your home or commerce; they are 100% waterproof and are not affected by moisture or humidity. Hybrid SPC requires an installation environment with a stable year round temperature between 0°C to 40°C.

Preparation of your subfloor:

- If you are installing over an existing floor, the existing floors must be securely attached (nailed or glued) to the subfloor and be smooth and flat. When installing over an existing wood or laminate plank floor, the new Project Floor must be installed at 90° to the rows in the existing floor.
- Wooden subfloors: plywood, OSB, or boards must be flat. High and low areas exceeding 1/8" per 6' or 3/16" in 10' must be corrected. Sand down high areas, fill low areas.
- Concrete: most concrete subfloors (slabs) are not flat and must be levelled before installation. In all cases, verify the subfloor using an 8' long straightedge to locate high and low areas. Low areas should be filled with a self-levelling compound per manufacturer's recommendations. Voids and bumps in the subfloor may prevent your floor's locking system from locking securely and may damage or weaken the locking system.
- Sweep or vacuum your subfloor immediately prior to installation ensuring there is no debris or grit on the subfloor, as it will interfere with proper product installation. Verify your subfloor is dry and clean. Check to ensure your subfloor is completely smooth. Nail and screw heads must be countersunk. Sand any protrusions including joints/seams between subfloor sheets. Check your subfloor structure to ensure there are secure nails or screws every 12" (30cm) along the joists and 6" (15cm) along bearing supports and seams. This will help to avoid squeaks and warping of the subfloor. You must replace any delaminated, swollen, or damaged subfloors sections.
- If the subfloor is at all dusty or the concrete is obviously porous use either Polymer 6000 primer or Universal primer diluted 3:1 with water to prime the floor before laying. If you need to use primer ensure you have allowed it to dry or nearly dry (5-10 minutes) before laying floor.

- NOTE: Avoid installation over subfloors with excessive flex or deflection. The installation of Project Floors will not reduce any flex or deflections in the subfloor. Excessive subfloor deflection may damage the locking system and cause it to fail.
- Project Floors may be installed over existing ceramic tiles. If tiles are uneven, skim coat the grout lines with a floor levelling compound and fill or repair any damaged or cracked tiles.

New subfloor installation:

Install the subfloor perpendicular to floor joists in staggered rows so that joints between adjacent sheets do not line up. $\frac{3}{4}$ " (19mm) plywood is recommended for 16" and 19.2" centre joists. For floors with joists exceeding 19.2" centres, a minimum subfloor thickness of 1-1/4 (32mm) is recommended. Nail or screw the subflooring every 6" (150mm) along joists to avoid squeaking and warping of the subfloor.

INSTALLATION INSTRUCTIONS

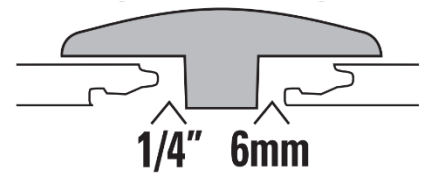
This product includes an attached thermos-acoustic under-pad:

The attached pad provides the following benefits: It will reduce footfall noise transfer to rooms that are below and adjacent to the area where the floor is installed. Additionally, in basement and on-grade concrete slab installations, it will provide a thermal break from the slab and provide you with a warmer floor.

IMPORTANT general tips for installing Hybrid SPC:

- Planks of the same product series and thickness are compatible and may be installed (clic-locked) together for a smooth, seamless installation between each floor area in residential installations. Commercial installations require the use of transition moldings between installation areas, **refer to figure 1.**
- Squeaks are caused when the subfloor separates from the joist or moves. This happens when there are temperature and humidity changes or when new construction "settles". When the subfloor moves up and down on a pulled nail or incompletely set screw, it causes the subfloor to squeak. Hybrid SPC may be installed over existing ceramic tiles. If tiles are uneven, skim coat the grout lines with a floor levelling compound and fill or repair and damaged or cracked tiles. Carefully inspect your subfloor and replace any nails that are not completely secure. Close adherence to installation instructions can minimise the risk of squeaks; however, there is no guarantee or warranty that your floor will not squeak.
- Note: It is recommended that your subfloor is screwed down rather than nailed down.
- Colour variation in different dye lots should be evenly distributed in your room. To achieve this, draw planks from a minimum of 3 boxes and multiple pallets at a time. Set aside any planks that have blemishes for use in less visible areas. Plank design variation should also be distributed evenly throughout your room to ensure that planks with a similar design are not adjacent to one another other. Install usable cut pieces in closets, adjacent to walls or in other less visible areas. Pay special attention not to have any end joints line up, end joints must be a minimum of 6" (15cm) apart.
- Verify locking profile is free of any contamination including: debris, grit, milling chaff, or other material; remove any contamination before installing. Also verify that the locking profile was not damaged during shipping or handling. Any pieces with damaged profiles should not be installed in main traffic areas; discard or install in a closet or non-traffic area. Cut any damaged or chipped section from planks and use these trimmed planks for the ends of rows.
- The preferred method of cutting Hybrid SPC planks is to use a sharp utility knife; when using this method, you must make a deep score and snap off the end of the plank. Note that you must also cut the attached under-pad as well as the same point where you scored the topside of the plank.
- Do not tap directly on the ends or the sides of the planks. When using a tapping block, only tap on the long sides of planks to ensure rows fit tightly. If you need to remove a plank, carefully lift up the plank you wish to remove, as well as the previously installed plank and slide it out laterally so not to damage the locking mechanism.
- If any end-seams resist fully closing tight and flush, the use of a rubber mallet will assist in fully locking the end of planks together. Firmly tap the surface of the plank you are installing along the end-seam to close the seam 100%.
- It is recommended that adjoining hallways, rooms and other areas are separated by using a T-moulding type transition trim. **Refer to Figure 1 on trim.**
- Room and product temperatures must be between (0°C to 40°C) when installing Hybrid SPC.

FIGURE 1: T-MOULDINGS



Getting started:

- Decide on the installation pattern you want your Hybrid SPC to have. Set up your starting line for the first row by measuring the width of the Hybrid SPC plank. Add 10mm (3/8") to this number and mark the floor at each end of your starting wall, approximately 6" (15cm) away from the corners. Snap a line along the wall where you wish to start. This will ensure your first row is straight, even if your wall isn't.
- Check to make sure there will be approximately 10mm (3/8") between the edge of your first row of planks and the wall. This space allows for slight expansion of the Hybrid SPC and will be covered by the baseboard / quarter-round. If there is too much space in any place along the wall, you will have to move your chalk line. If there is too little space at any point along the wall, however, you may have to trim some of the planks in the first row.
- Hybrid SPC features the patented 5G special plank-end locking system which makes installation easier and faster than conventional clic systems. It also gives your floor the added benefit of having exceptionally tight and securely locked plank end-joints.
- Layout first row of planks, the side with the narrow tongue (male) should be facing the wall. Lock the ends of the planks together by inserting and locking the end of the next plank into the previous one so that the planks are all securely locked together and aligned in a straight line. First plank should start 10mm (3/8") from the wall. Cut the last plank to finish 10mm (3/8") from opposite wall. If necessary, use your hand or a rubber mallet to firmly tap the surface of the plank you are installing along the end-seam to close the seam 100%.
- Installing 1st row: work from left to right, carefully inserting the ends of one plank into the next, cutting the last plank so there is a 10mm (3/8") gap once locked into place. Complete the entire length of the 1st row; if the waste from the piece is 6" (160mm) or longer, it may be used to start the next row.

- **Important note:** Mark your cut on the last plank and use a saw or sharp utility knife to cut it. If you need to remove and replace any planks during installation, carefully lift and slide out the planks to avoid damaging the end locking profile.
- When installing 2nd and subsequent rows: install from left to right. When possible, start the next row using the leftover cut piece of the last piece of the previous row. Place a 10mm (3/8") spacer between the wall and the end of the first plank in the 2nd row. Starting on the left side, start the 2nd row by installing the first plank into the previous row securely. Insert the long side of the next plank into the previous row at an angle of approximately 20°, slide it to the left so the end perfectly aligns with the previously installed plank and lower it into place. Run your thumb over the end seam to make sure the end seam is flush and securely locked. If necessary, firmly tap the surface of the plank along the end-seam with a rubber mallet and to close the seam 100%. Repeat this process to complete the entire row. **Refer to Figure 3.**
- NOTE: The 100% correct installation of the 1st and 2nd rows is very important. Once these 2 rows are fully installed, verify that all of the ends of the planks are perfectly aligned and that all of the long seams are 100% fully closed. Correct any alignment issues or small gaps before continuing the installation.
- Continue installing the remaining planks of the 3rd and subsequent rows in the same manner, cutting the last plank so there is a 10mm (3/8") gap once locked into place. Note: end-joints between planks or tiles should never be closer together than 6" (15cm) apart. **Refer to Figure 2.**
- Use the last cut piece from each row to start the next row. Install each row completely.
- To avoid having the end seams lining up and patterns forming, trim the left end of the starting plank so that the first end seam does not align with the previous 6 rows. This will give your floor a more attractive appearance. **Refer to Figure 2.**
- Inspect the floor and verify the floor is perfectly straight and that all sides and ends of planks are fully clicked together and all seams/joints are fully closed and locked together. Lift and reinstall any areas where planks or tiles are not fully clicked and locked together. Also verify you are satisfied with each plank's appearance, condition, and quality.
- Continue to install the floor in sections of 5 complete rows. After each 5 rows, again inspect the floor as outlined above.
- Before installing last row, again verify the entire floor for any gaps or errors. Ensure there is a minimum 10mm (3/8") gap around the entire floor's perimeter; this includes all walls, door jambs, posts, heating ducts, plumbing, cabinets, stairways, railings and any other vertical surface or obstruction.
- Measure and cut the last planks to fit so that there is a minimum 10mm (3/8") gap along the last wall.
- When installing trim, you must leave an expansion joint of 1mm/1m and 5-8mm/15m.

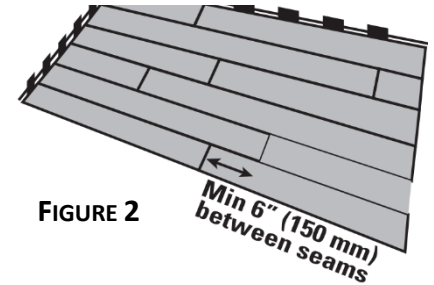
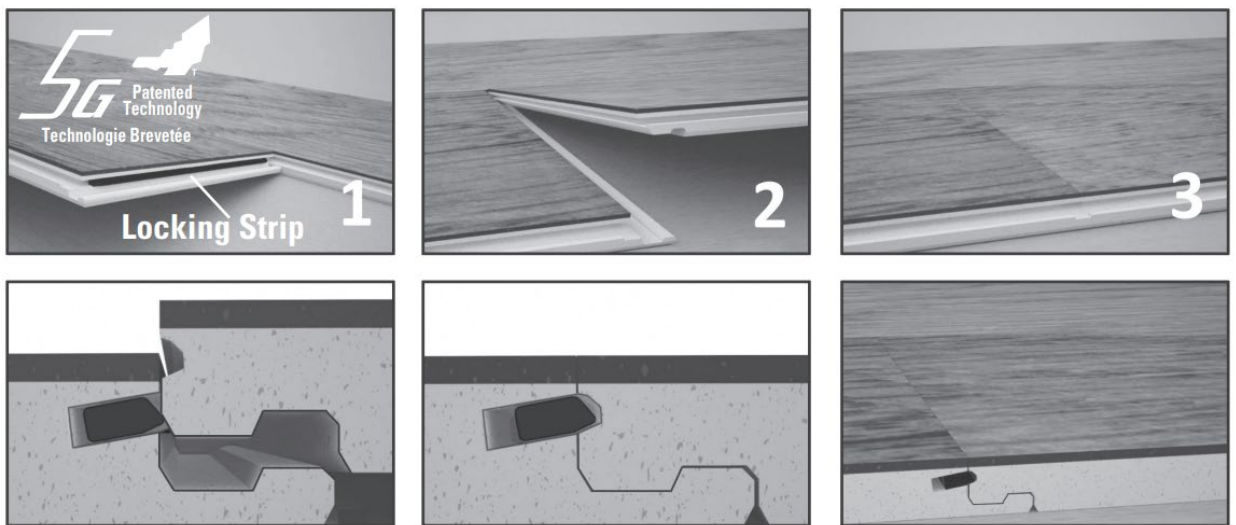


FIGURE 2

INSTALLATION IS AS EASY AS 1-2-3

FIGURE 3



Maintenance of your Hybrid SPC floor

- Regular vacuuming and periodic cleaning of your Hybrid SPC will protect its beauty and lasting finish. More frequent attention is recommended in high traffic areas, as well as near exterior and garage entrances. For a thorough cleaning, use specially formulated vinyl and hardwood flooring cleaning products and a micro-fibre mop available at most hardware and flooring retailers. Use as per manufacturer's recommendations. You may also damp mop your Hybrid SPC using warm water with a small amount of dishwashing or other mild liquid soap.
- Do not use cleaning products which contain surfactants or which leave a residue. Use of these products will leave a dull film on your floor and may void product warrant. Before using any cleaning product, test it first on a small, less visible area of the floor.
- Place small non-slip mats or rugs at all exterior or garage entrances to the home to protect the floor from dirty shoes, boots, etc. This will remove loose dirt and debris from shoes. Clean rugs and mats on a regular basis.
- Do not use polishing products. The use of these products may leave a dull residue and may void your warranty.
- Do not use abrasive products, bathroom cleaning products, ammonia based products, wax based polishes/cleaners, acrylic finishes, acidic or vinegar based solutions, oil soaps, detergents, chlorine based products, bleach, solvents, or any type of polishes. The use of these products may permanently damage the finish of your floor and may void the warrant.
- Keep your pet's nails trimmed, especially larger dogs, as their nails may scratch the floors. Note that pet nails from medium to larger sized dogs may leave minor marks on the surface of this floor due to the floor's finish abrading the pet's nails; this is normal and is not considered damage to the floor.
- Clean spills immediately to prevent them from running between the cracks. Small spills should be cleaned up with a lightly dampened cloth and a small amount of dishwashing soap.

- Do not roll or slide furniture or appliances with castors across the floor. Castors may damage the floor's finish. Carefully and safely lift and move the object into place. To minimise possible wear and damage, felted furniture leg coasters are recommended under furniture legs. Install felt floor protectors under furniture legs to avoid scuffing or scratching. Clean or replace felt protectors on a regular basis to remove built up grit that may have become embedded. Chairs with castors must be fitted with only barrel (roller) type castors and have a protective mat or carpet placed under the chair in the area where the chair moves.
- High heels with missing heel lifts can cause denting to Hybrid SPC. Damage resulting from any footwear is specifically excluded from the warranty.
- Minor damage or gaps can be repaired using vinyl seam sealer available from your local hardware supplier. Follow the manufacturer's instructions. Save all leftover planks for unforeseen needs of plank replacement in the event of damage.

IMPORTANT FACTS:

- Do not install Hybrid SPC over any type of soft underlay like foam, carpet, or other soft, rough, uneven or non-flat surfaces.
- Direct exposure to sunlight from large windows and patio doors can cause the surface of the floor to exceed the product installation temperature limitations; in south to west exposure rooms with multiple and/or large windows or patio doors, it may be necessary to install blinds or drapes. Rapid temperature change (heat from direct sunlight) may cause floor to temporarily expand in these areas.
- Hybrid SPC is designed for indoor use only and not approved for any type of exterior use; installation outdoors will void product warranty.

If laying Hybrid SPC in Herringbone pattern

Follow instructions from laying as above, but cut your planks to size as follows (note: there are two options for #11):

