

We speak carpet tile!



MIFLOR

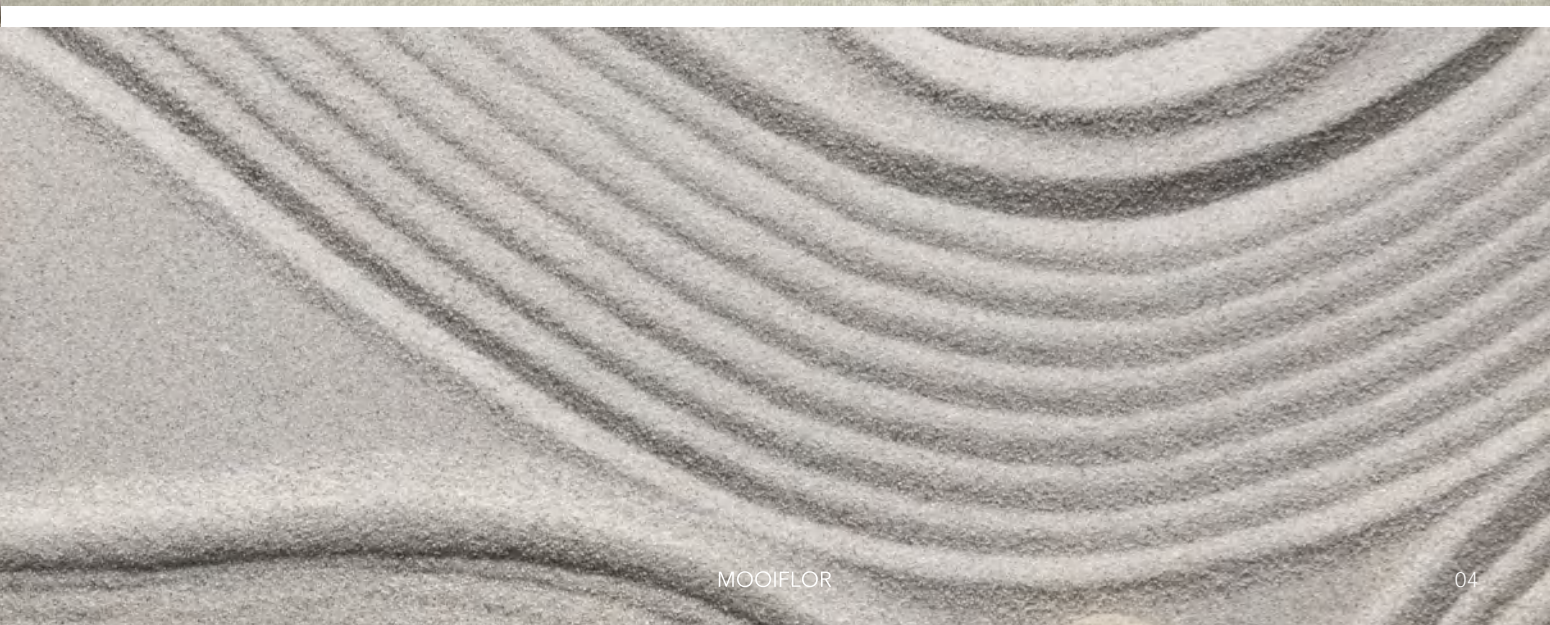
We speak carpet tile!

Start with  
MOOIFLOR ...  
... and lead  
a more creative,  
productive life.



Wavelet A 3

MOOIFLOR



Wavelet A 1



Wavelet A 1+Wavelet A 2






Creativity  
is more than  
just being  
different.  
Making  
the simple,  
awesomely  
simple,  
that's  
creativity.







Wavelet B 1 



Wavelet B 2+Wavelet C 2 



Wavelet C 3



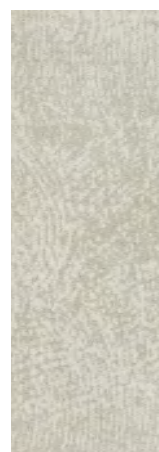


May time be gentle,  
may time never be wasted,  
and may all your luck  
come by chance.





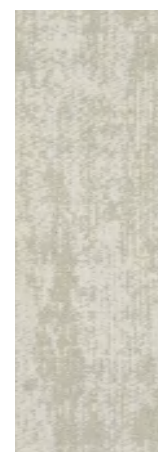
WAVELET SERIES  
微澜



Wavelet-A 1



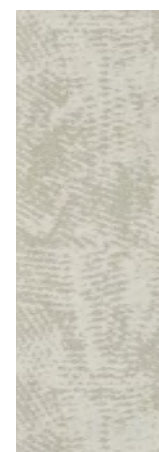
Wavelet-A 2



Wavelet-B 1



Wavelet-B 2



Wavelet-C 1



Wavelet-C 2



Wavelet-A 3



Wavelet-A 4



Wavelet-B 3



Wavelet-B 4



Wavelet-C 3



Wavelet-C 4

INSTALLATION METHODS



Herringbone



Ashlar



Monolithic



Brick



Declare. Ecover®



Style Name: 微澜/Wavelet-A/B/C  
 Construction: Multi-level loop  
 Yarn: Universal Nylon6 & Plencolor Nylon6  
 Color System: 100% Solution Dyed  
 Gauge: 1/10  
 Stitches: 9 per inch  
 Pile Weight: 22-23 oz/yd<sup>2</sup>  
 Pile Height: 4.5mm-8.0 mm (±0.5mm)  
 Backing: UltraEco  
 Tile Size: 33.3cm×100cm  
 Area of Use: Heavy Commercial  
 Flammability: Passes (ASTM E 648-17) Class I  
 Passes (GB 8624-2012) B<sub>1</sub>  
 Smoke Density: Passes ASTM E 662 Less than 450  
 Static Propensity: Passes AATCC-134≤3.5kV  
 Static Control: Life-of-the carpet Static Protection  
 Formaldehyde Purification: Passes (JC/T 1074-2008) Class I

Wavelet C 1

