

PROJECT FLOORS

WHY CHOOSE ORGANIC FLOORING

Purline

PURLINE organic flooring is a natural and environmentally product based on ecuran; a high-performance composite material made predominantly from vegetable oils such as rapeseed or castor oil and naturally occurring mineral components such as chalk.

Available in plank, tile, or sheet. Fully versatile, ideal for application in any sector, and can even be applied to walls.

- ✓ **Acoustically sound.** Integrated acoustic underlay that when laid on concrete of provides a weighted impact sound improvement of 17dB.
- ✓ **Environmentally friendly.** Purline is currently the most ecological resilient floor covering on the market whether in production, everyday use, or recycling.
- ✓ **Healthy & Safe.** Made from natural ingredients, Purline offers a healthy living alternative for sustainable building. There is deliberate avoidance of adding chlorine, plasticisers and solvents. The organic flooring does not release any harmful substances into the room, and is completely odour-neutral and emission-free.
- ✓ **Certified.** Manufactured in Germany, not only is the quality of Purline second-to-none, but due to it being a fully organic product, it has both Declare and Cradle to Cradle certification.
- ✓ **Extreme Durability.** Purline is extremely durable and resilient.
 - Chemical and mechanical influences barely have any effect on it.
 - The organic flooring shows unique recovery rate of almost 100%
 - Its UV resistance is extremely high: no fading from the sun.
- ✓ **Slip resistant.** Defined as meeting coefficient of friction of not less than 0.4 when tested in accordance with AS/NZS 3661.1.
- ✓ **Classic and timeless designs.** Available as plank, tile, or sheet. A wide variety of design options, including various colours, patterns, and textures. Options to suit every style and taste.



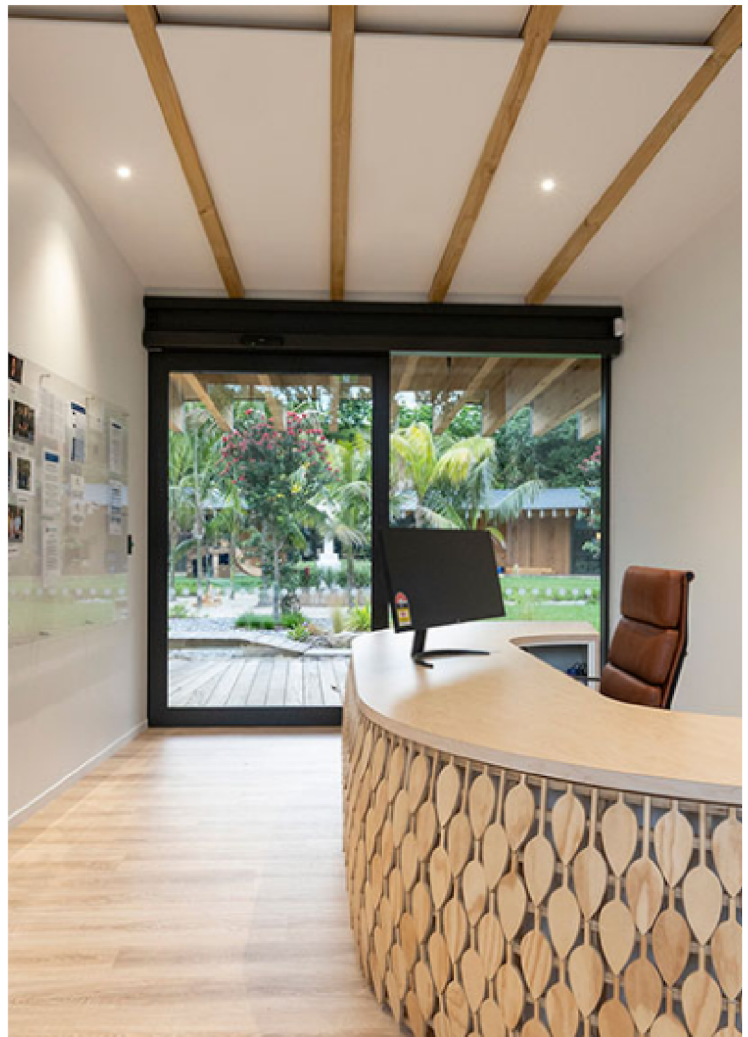
Rapeseed oil or Castor oil

Natural and renewable - the perfect substitutes for plasticisers and crude oil

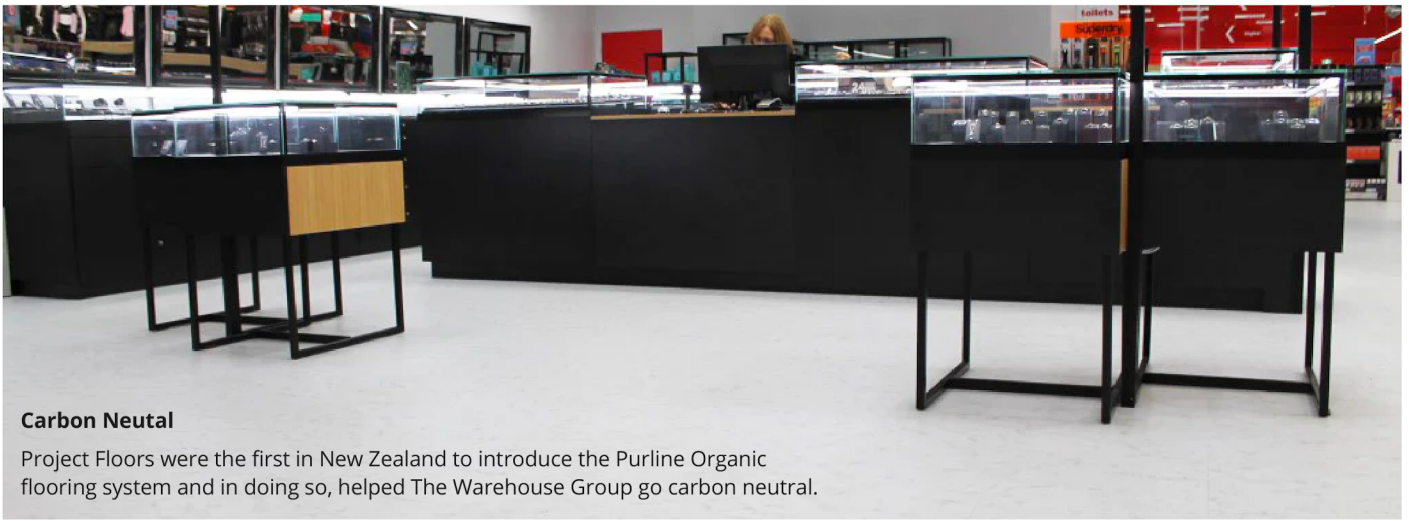


Chalk

Harmless and exceptionally fine - an optimal filler



Purline: Saint Kentigern Preschool, Image: Smiths Architects



Carbon Neutral

Project Floors were the first in New Zealand to introduce the Purline Organic flooring system and in doing so, helped The Warehouse Group go carbon neutral.

Wear class according to EN 14565	EN 685/EN IOS 10874	24, 34, 43
Total thickness	EN 428/EN ISO 24346	2.5mm
Weight EN 430/EN ISO 23997	Roll: 3.6kg/m ²	20Lm roll: 144kg
Residual indentation EN 433/EN ISO 24343-1	Roll: 0.05mm	
Dimensional Stability EN 434/ISO 23999	Roll: ≤ 0.05%	
Bending Behaviour	EN435/ISO 24344	<20mm
Wear Behaviour	EN 660-2	Group T
Anti-slip friction coefficient	DIN 51130	R9
Slip resistance EN 13893		DS (> 0.3)
Reaction to fire	EN 13501-1	Cfl-s1 highly flame resistant
Light fastness	EN ISO 105-B02	≥7
Underfloor Heating	Suitable for all standard hot water underfloor systems	
Thermal resistance	ISO 8302	0.01 m ² K/W
Resistance to castor chairs	EN 425/ISO 4918	Typ W
Impact Sound Improvement	EN ISO 10140	4 dB
Chemical resistance	EN423/ISO 26987	Very good resistance depending on concentration and exposure time
Warranty	10 years	
Furniture leg test	EN 424	No visible damage
Antistatic properties	EN 1815	≤ 2 KV

Please refer to separate cleaning, maintenance and installation instructions

20m long 2m wide roll (40m²/roll)

BENEFITS

Comfortable Underfoot

Purline has a soft and warm feel underfoot, providing a comfortable walking surface. It offers excellent acoustic properties, reducing noise transmission and making it ideal for areas where noise reduction is desired.

Easy Maintenance

Easy to clean and maintain. It has a protective surface layer that is resistant to dirt and easy to wipe clean. Regular sweeping and occasional damp mopping are usually sufficient to keep the floor looking its best.

Hygienic


Purline is hygienic and hypoallergenic. It is resistant to moisture and does not promote the growth of mold, bacteria, or allergens. This makes it a suitable choice for individuals with allergies or respiratory sensitivities.





AUCKLAND DESIGN HUB: 55A Barrys Point Road, Takapuna, Auckland, 0622

CHRISTCHURCH DESIGN HUB: 41 Welles Street, Christchurch Central, 8011

WAREHOUSE: 24A Fremlin Place, Avondale, 1026

 www.projectfloors.co.nz

 09 444 4165

 salesoffice@projectfloors.co.nz