

PROJECTFLOORS

Project Floors NZ Ltd

55 Barrys Point Rd, Takapuna, Auckland 0622

41 Welles Street, Christchurch Central, Christchurch 8011

P: 09 444 4165 E: salesoffice@projectfloors.co.nz

www.projectfloors.co.nz

Project Floors , Community LVT Flooring & NZ Building Code E3

Amendment 7 to E3/AS1 on Internal Moisture

Amendment 7 of the Acceptable Solution E3/AS1 for Clause E3 on Internal Moisture under the New Zealand Building Code took effect on November 3, 2021, replacing Amendment 6, which expired on the same date.

Although Amendment 7 was officially introduced on November 5, 2020, it included a one-year transition period.

One key update in this amendment is the reclassification of dishwashers and washing machines as Sanitary Appliances and basins and sinks as Sanitary Fixtures.

Flooring near these sanitary fixtures and appliances must now feature a finish that is both waterproof and easy to clean, extending at least 1.5 meters from the fixture.

Independently Tested Flooring Solutions – Project Floors Concrete + Composed, Community LVT

Project Floors Concrete + Composed, Community LVT Flooring has been independently tested in New Zealand by SGS Industrial Certification Services.

A 24-hour water spill test revealed no visible changes or water penetration to the flooring substrate when installed according to the following method:

Substrate Protection:

If required, a Uzin PE414 BiTurbo Blocking Primer should be used to protect the substrate from moisture.

Flooring Installation: The LVT flooring must be adhered to the substrate with Uzin KE68T 1-Component Hybrid Adhesive.

Sealing: All perimeter edges and penetrations should be sealed with MS Silicone.

Additional Notes:

A membrane is only necessary in wet areas such as bathrooms or shower rooms. For multi-level residential buildings, this should be considered. In kitchens or sculleries, Uzin KE68T Hybrid Adhesive provides sufficient moisture protection for the substrate. Project Floors recommends a suitable levelling compound if needed.

TEST CERTIFICATE No.: INZ82553-02

Client:	Project Floors (NZ) Limited
Order No.:	PO106445
Sample Description:	Vinyl plank
Identification:	JRP - 2mm Vinyl Planks
Material Specification:	Not specified
Tested in accordance with:	As per method statement

Test: To test the leakage potential of flooring sample supplied.

Method: Three planks were assembled and glued to a clear perspex sheet by the client and delivered to SGS. Two 50mm diameter areas (tee and line intersection between the planks) were selected and sealed off by SGS and then exposed to 5cm³ water which contained red coloured food dye. The sample was left to soak water for 24 hours at 23°C and 75% R.H. After 24 hour duration, any remaining dyed water was carefully removed and the underside of the flooring inspected for any signs of leakage.

Results: After 24 hours, both the sealed areas were able to hold the water for 24 hours. No leakage observed.



Fig 1: Sample as supplied

Acceptance Criteria: Report findings

Tested by: M.Bhatt	Reviewed By: Kelvin Chin	Authorised By: Leonard Kong
--------------------	--------------------------	-----------------------------

Date: 24-Sep-24	24-Sep-24 <i>Kelvin Chin</i>	24-Sep-24 
-----------------	---------------------------------	--

This document is issued by the Company under its General Conditions of Service accessible at <http://www.sgs.com/en/Terms-and-Conditions.aspx>. Attention is drawn to the limitation of liability, indemnification and jurisdiction issues defined therein. Any holder of this document is advised that information contained hereon reflects the Company's findings at the time of its intervention only and within the limits of Client's instructions, if any. The Company's sole responsibility is to its Client and this document does not exonerate parties to a transaction from exercising all their rights and obligations under the transaction documents. Any unauthorized alteration, forgery or falsification of the content or appearance of this document is unlawful and offenders may be prosecuted to the fullest extent of the law.
 WARNING: The sample(s) to which the findings recorded herein (the "Findings") relate was(were) drawn and / or provided by the Client or by a third party acting at the Client's direction. The Findings constitute no warranty of the sample's representativeness of any goods and strictly relate to the sample(s). The Company accepts no liability with regard to the origin or source from which the sample(s) is/are said to be extracted unless otherwise stated the results shown in this test report refer only to the sample(s) tested. Samples will be retained for two (2) weeks after test date before disposal at SGS New Zealand Limited's discretion. Returning of samples to be advised in writing. Storage (when agreed by SGS New Zealand Limited) or return of samples at client's expense.



PROJECTFLOORS

@JRP COLLECTION

When planning and modernising any space the goal is to create a productive space for all. Wellbeing in all spaces increases motivation, creativity and efficiency. An environment in which one feels at home is made up of the correct materials, forms and colours in order to leave behind an overall impression of comfort and warmth.

Project Floors specialises in design floor coverings, which offer real advantages in modern design. Bespoke or standard, carpet planks and tiles, authentic reproductions of wood, stone and ceramic designs which are almost indistinguishable from the real thing and form the foundation of your personalised interior, be it discreetly reserved or eye-catching and provocative.

The sheer wealth of designs means there's something for everyone, offering unlimited ways in which to combine and compliment them with different designs patterns. The use of features, inlays or borders to create an individual interior design. Different module sizes and shapes from planks to squares in a special format can offer classical elegant installations like herringbone or chevron.

In all you can use this fact to change the most unwelcoming interior to a harmonized ambience with suitable materials, shapes and colours. Harmonic surroundings can contribute to the wellbeing and a more positive attitude towards life in all areas.

@JRP

@jrp allows you to be as creative as you would like while meeting the demands of your environment. Hardwearing, durable and quiet underfoot.

@jrp offers the contemporary design of a wider plank, leaving an ever lasting impression.

Also available embedded with Ultrafresh antibacterial properties.

COLOUR OPTIONS @JRP

1219.2 X 184.2 X 2.5MM – 3.37M2/BOX



JRP 01



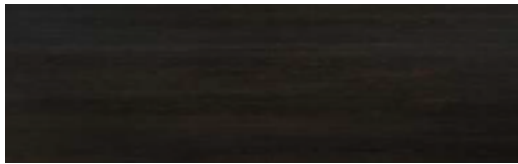
JRP 02



JRP 03



JRP 04



JRP 05



JRP 06



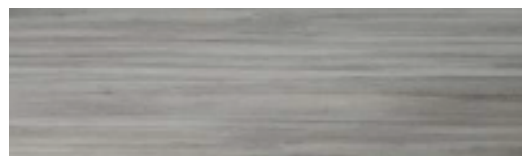
JRP 07



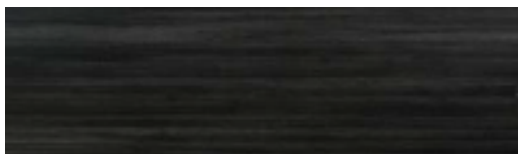
JRP 08



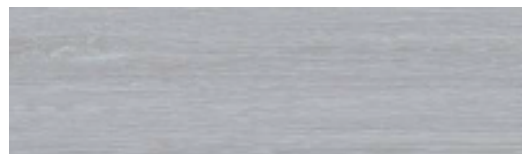
JRP 09



JRP 10



JRP 11



JRP 12



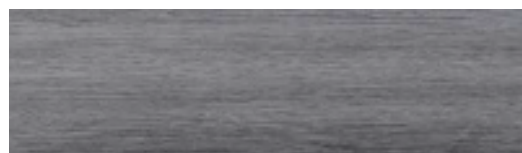
JRP 13



JRP 14



JRP 15



JRP 24

MOQ's apply to some colours. To find out more, or to order a sample, please contact one of our Team or visit our website

Product Specification

Product Type	Heterogeneous Planks
Product Construction	Hot Press Plank
Embossing	NTWL, WGL, STD, RGLB, RSL, WGH, TXH, NSWL, ESL, CRL, #300TL, CRH
Total Thickness	2mm
Wear Layer Thickness	0.3mm
Size Description - Planks	914 x 152, 914 x 102, 1219 x 183, 914 x 183, 1219 x 184mm
Size Description - Tiles	457 x 457, 457 x 305, 610 x 305mm
Slip resistance	R10
Total Weight	4.8kg/m2

Performance Specifications

Area of Use	Commercial or Residential
Performance classification EN ISO 10582 / ISO 10874	21, 31
Stability - Dimensional Stability	$\leq 0.15\%$ *
Wear - Castor Chair	No
Colour fastness to artificial light ISO 105-B02/2	> 7 (UV damage is not covered under Standard Warranty)
Chemical resistance ISO 26987	Conforms (Vis-a-vis the short-term effects of normal, domestic agents.)
Critical Radiant Flux	7.7Kw/m2
Behaviour to fire EN 13501-1 Bfl-s1	Bfl-s1
Electrostatic characteristics EN 1081	> 1012
Antimicrobial	Smart Antimicrobial Available as Standard

General Specifications

Acoustic	4dB IIC
Residual indentation ISO 24343-1	$\leq 0.1\text{ mm}^*$
Underfloor Heating (max temp)	Suitable up to 28 °c
Resistance to thermal conductivity ISO 8302 / EN 12667	0.02 m2 K/W

Environmental Specifications

Indoor Air Quality	Eurofins Gold Indoor Air Comfort - IACG-32-2011019-02-2018
End of Line	Commercially Recyclable
Installation	Refer Project Floors Installation Guidelines
Maintenance	Refer Project Floors Maintenance Guidelines
Reclamation	Commercially Recyclable
Warranty	15 Year Standard Warranty

Fire Report

Material Specification:
 Nominal Composition: Vinyl, Polyurethane Coating
 Nominal Total Mass: 44 kg/m²

ASISO 9239.1-2003 Reaction to Fire Tests for Floorings
 Determination of the Burning Behaviour
 using a Radiant Heat Source

Date of sample arrival: 01/08/2014
 Date tested: 24/09/2014

	CHF (Critical Heat Flux / Critical Radiant Flux)				
	1	2	3	Mean	
Non directional	8.0	7.6	7.6	7.7	kW/m ²
	Smoke Value				
Non directional	100	111	78	96	%min

Note: Sample was conditioned in accordance with BSEN 13238-2001 at a temperature of 23+/-2degC and Relative Humidity of 50+/-5% for a minimum of 48 hours prior to testing

No directional properties, three specimens tested only.

Each specimen was clamped to a substrate of 6mm thick fibre reinforced cement board prior to testing.

The test results relate to the behaviour of the test specimens of a product under the particular conditions of the test, they are not intended to be the sole criterion for assessing the potential fire hazard of the product in use

Light Reflectance Values by Colour

JRP 01	30	JRP 02	34
JRP 03	16	JRP 04	13
JRP 05	4	JRP 06	38
JRP 07	51	JRP 08	41
JRP 09	47	JRP 10	20
JRP 11	7	JRP 12	37
JRP 13	35	JRP 14	19
JRP 15	7	JRP 24	18

Installation Instructions

The majority of installation issues/failures are not caused by poor fitting but by the failure to condition the vinyl planks & tiles prior to installation, especially with the unique conditions and fluctuations of temperatures experienced in New Zealand.

Project Floors NZ are here to help so if in doubt please call us and read the below. 09-444 4165

Important general information:

Before starting work, make sure that the delivered product is in perfect condition. No claims can be made subsequently for cut or installed goods.

Acclimatization of all Project Floors NZ Plank & Tile Ranges

Project Floors NZ Planks & Tiles must be conditioned for at least 48 hours prior to installation as per NZS AS 1884:2013. Boxes of tiles/planks must be opened and stacked less than 5 boxes high to allow proper acclimatization. NZS AS 1884:2013 requires the room temperature to ideally be between 18 and 26°C but more importantly should be constant and not varying by more than 5-7° C for the 48 hours before nor the 48 hours after installation has been completed. As changes of temperatures can occur between the day and the night, it is essential that these be avoided. South facing windows and all conservatory windows should be shaded to minimize daytime fluctuations. Heating systems, which are thermostatically controlled should, when necessary, be left on during the night to achieve a constant similar to that of the daytime. If the installation area is in direct sunlight, pull blinds/curtains or paper block out the windows for at least 24 hours before and after installation. Issues arising from the failure to correctly condition the tiles and planks, which result in shrinkage or lipping, will not be accepted if the above and below has not been completed.

Installation

In order to achieve an optimal installation result with as little waste material as possible, it is recommended to measure out the area being covered and to divide up the material format and installation pattern accordingly. In order to achieve an optically appealing installation pattern, we recommend that joints are sufficiently offset (for plank formats approx. 30 cm). Vinyl Planks and Tiles should always be glued over the whole area. To comply with Warranties your required to use an approved adhesive. You can find more detailed information in our adhesive recommendation. Wet bed adhesives are required instead of pressure sensitive adhesives. A 1.5mm V notch trowel in good condition should be used and maintained (i.e. Cleaned and re notched if needed) throughout the installation process.

Under Floor Heating

In installations where under floor heating is used, this should be switched off 48 hours prior to installation until 48 hours afterwards. It should be brought slowly back up by 1°C per day to working temperature; a maximum of 27°C. peak temperature should be avoided for a further 7 days.

Sub Floors

The quality of a finished installation can be dependent and successful upon the correct preparation of the sub-floor, the attention paid to our recommendations made in various codes of practice and by the manufacturers of the adhesives and smoothing compounds. The information contained below is given based on substantial years of experience and knowing when things go right and when things go wrong and, more importantly, how to avoid them following a correct approach to each sub floors conditions. planks & tiles prior.

Particle or Strand Board

All joints should be glued for accurate location and finished level. All Chipboard or Strand board should comply with BSEN: 312:2003 and should be free of sealants or coatings which are liable to adversely affect adhesion of the floor covering. Boards with a moisture content of less than 7% and greater than 18%, using an electrical resistance moisture meter, should not be laid onto.

All nail and screw heads must be below the surface of the board and any indentation filled with a suitable flexible underlayment as should the joints between any boards that have been used to overlay the existing floor. The surface should be primed using a primer compatible with the adhesive, (LOCKFAST DURASEAL) as recommended by the adhesive manufacturer.

The primer will minimize adhesive usage and maintain the open time of the adhesive and prevent preferential absorption. On completion of sanding the board and applying the appropriate primer/sealer then a full coat of Matrix or FLC or similar must be applied to the board to ensure the substrate is sound and ready for the product.

Concrete Floor

The most common cause of issues in these types of substrate is moisture either as construction moisture or the lack of an effective moisture barrier on direct to earth sub floors.

All concrete bases, which are direct to earth, must have an effective damp proof membrane incorporated within them. It should only be considered as effective if the perimeter edges are continuous with the DPM in the walls.

In all cases we recommend the appropriate sealer and dependent on the quality of the concrete floor, minimum feather finish screed or a full coat of matrix to the concrete floor.

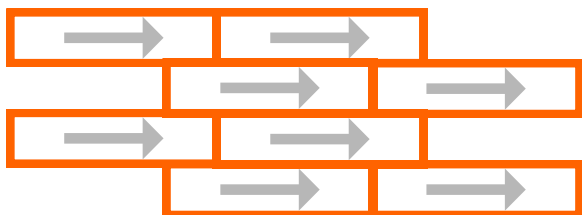
Ensuring installing into WET Glue

Once the start point has been established, depending on the size of the area and type of adhesive to be used, Project Floors Requires Project Bond or Approved alternative to be used it may be necessary to section off the area so that the adhesive can be applied to areas that can be laid within the open time. When sectioning off for adhesive application, parallel lines should be marked and adhesive spread within them. This will ensure that only the amount of adhesive is applied that can be laid within the open time.

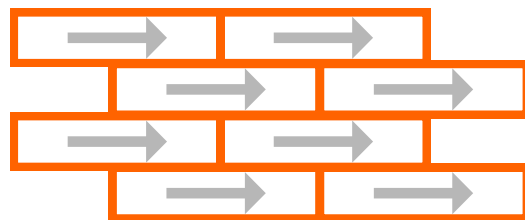
When a section has been laid, except for the perimeter, it should be thoroughly rolled in both directions with a 50-65kg articulated floor roller. Trowels should be checked regularly to ensure the correct notch size is maintained throughout the installation. If the notch shows signs of wear it should be renewed immediately.

With the exception of Project Floors products being installed with a pressure sensitive adhesive, which can receive foot traffic immediately following installation, all projects that have used a water-based adhesive must be free from general foot traffic for a period of 24hrs after installation or protected during this time frame.

Installation Patterns

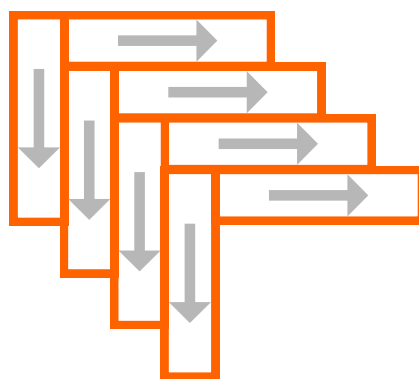


ASHLAR (PLANK)



BRICK (PLANK)

- Use only warranted ProjectBond Adhesive available from Project Floors
- Back of tile arrows show direction
- Random tiles should have less than 2% waste
- Always leave spare tiles for customer repairs and maintenance
- Always install according to NZS AS 1884:2013



HERRINGBONE (PLANK)

Cleaning and Maintenance

Initial Clean at Handover

Vacuum, dust mop, or damp mop to remove all loose dirt. Remove all traces of glue left from the installation using a cleaner as advised by the adhesive manufacturer. If the floor is heavily soiled due to the construction process it should be scrubbed clean using an alkaline cleaner diluted in accordance with the manufacturer's instructions. The alkaline cleaner should be left on the floor for a few minutes to allow it to react with the dirt. A rotary scrubbing machine fitted with a clean appropriate scrubbing pad will help speed up this process in large areas. For small areas the alkaline cleaner can be mopped onto the floor. The dirty residue should be removed with a wet vacuum or mop and the floor should then be thoroughly rinsed and allowed to dry.

On-Going Maintenance

Vacuum, dust mop or damp mop the floor daily to remove loose dirt and dust. Marks should be removed by using a neutral cleaner. For stubborn marks an alkaline cleaner can be used. Remember to leave the cleaner on the mark for a few minutes to allow it to take maximum effect.

In areas of medium to low traffic the floor should be simply dry buffed with a rotary machine fitted with a clean appropriate buffing pad.

In heavy traffic areas the floor should be regularly cleaned using a floor cleaner/scrubber, the frequency will depend on the traffic conditions of the area. The floor maintainer should be diluted in accordance with the manufacturer's instructions, and either mopped onto the floor and allowed to dry or applied in a spray and buffed dry using a rotary machine fitted with a clean appropriate pad.

Application of a floor Polish or Dressing

PROJECT FLOORS products incorporate a polyurethane surface treatment, which means that in many situations it is not always necessary to apply a floor dressing. However, the application of a floor dressing will provide additional protection in heavily trafficked areas & is recommended to enhance the floorcovering.

A high-solids, metalized polish, a polymer dispersion such as Platinum 25, Satin or Uno will provide good protection for the floor. Before application, ensure that the floor is clean and free of any other finishes. It is recommended that the polish/dressing used is compatible with all other maintenance products.

The polish/dressing should be applied in a thin coat using a lint free mop and allowed to dry thoroughly. Subsequent coats should be applied at right angles to the previous one to ensure an even coverage. Two/three coats should be sufficient to provide good protection in heavily trafficked areas.

If a polish/dressing has been applied this will need to be removed from time to time. The interval for removal is usually 6 months but again this depends on traffic conditions. Essentially, the polish/ dressing should be removed when routine maintenance is starting to become less effective.

To remove the polish/dressing first ensure that the floor is clean of all dust and dirt. Then apply the stripper recommended by the polish/dressing manufacturer and leave it on the floor for a few minutes to break down the polish/dressing. The floor should then be scrubbed using a rotary scrubbing machine fitted with a clean appropriate scrubbing pad. The resulting residue should be removed with a wet vacuum or mop and the floor should be rinsed clean with clean water. When dry the polish/dressing can be re-applied.

TIPS TO ENSURE SUCCESSFUL MAINTENANCE OF PROJECT FLOOR PRODUCTS

- An effective dirt barrier system at entrances will significantly aid your maintenance programme. The dirt barrier should be at least 3 paces deep and be effective for both dry and wet soiling.
- A regular programme of maintenance is always the most effective - Prevention is Better than Cure.
- Always use clean equipment; should be cleaned after use.
- Remove all spills straight away.
- Always follow the manufacturer's dilution rates and don't mix products from more than one manufacturer.
- Protect the floor from dark rubber (car tyres, rubber mats etc) this will discolour the floor.
- Do not allow furniture polish and other silicone cleaners to get onto the floor; these will cause a slip hazard.
- Use protective pads under furniture legs and use polyurethane castors on heavy movable furniture.

ProFloor Stripper

ProFloor Sealer

Reflect Maintainer

All products available in 1 litre and 5 litre packs



15yr Vinyl Plank Warranty

Project Floors (NZ) Ltd warrants our market leading vinyl products to be free from material and manufacturing defects for a LIFETIME.*

Project Floors (NZ) Ltd further warrants that the product will not require replacement due to normal wear and tear within the stated period.

* Warranty limited to conditions as stated below

www.projectfloors.co.nz

INVOICE NUMBER:

PRODUCT:

CUSTOMER NAME:

ADDRESS:

DATE OF INSTALLATION:

RETAILER:

INSTALLER:

SIGNED (DIRECTOR)

ISSUED FOR AND ON BEHALF OF PROJECT FLOORS (NZ) LTD

SAMPLE
ONLY

CONDITIONS:

The Warranty is on the condition that the sub-floor area is prepared to meet building standard under AS/NZS 1884 and the product is installed in accordance with Project Floors Standard AS/NZS 1884 "RESILIENT TILES and SHEET LAYING and MAINTENANCE PRACTICES", all current at the time of installation, and is maintained in accordance with the supplied Project Floors Maintenance Programme.

Project Floors (NZ) Ltd will not be held responsible for product failure arising from circumstances beyond its control such as structural movement, excessive moisture, vapour or alkali in a concrete sub-floor, abuse, accidents, the effect of chemical or aggressive solvents, the incorrect use of cleaning agents or incorrect maintenance procedures.

Project Floors (NZ) Ltd will not be held responsible if the product used has not been correctly specified for the use of room or rooms in which it was installed

VINYL PLANK TERMS & CONDITIONS

We believe that you deserve peace of mind and honesty when it comes to warranties. Project Floors warranties and products have been developed to meet your needs and give you confidence in your purchase. Plus with over 20 years proven experience in New Zealand, you can rely on us to stand by our word. Vinyl planks are a substantial investment, so it's important you understand exactly what your warranty covers. If you have any queries regarding our product warranties, make sure you contact us at office@projectfloors.co.nz

All warranties apply to the original purchaser only and installation site(s) and are not transferable.

Purchaser's Responsibilities:

- Keep proof of your vinyl plank purchase from your retailer together with proof of the installation date.
- Ensure the vinyl planks are installed by a Floor NZ registered flooring installation contractor. Please also ensure the installer consults with Project Floors to ensure the vinyl planks are installed to the recommended guidelines and with the recommended products, e.g. adhesive.
- Vinyl plank must be purchased from an Project Floors approved dealer.

Manufacturing Defects

Project Floors warrants this vinyl plank against manufacturing defects for up to 15 years provided:

- The vinyl plank was purchased from an Project Floors approved retailer and installed by a Floor NZ registered flooring installation contractor who has consulted with Project Floors to ensure the vinyl plank is installed to the recommended guidelines and with the recommended products, e.g. adhesive.
- The vinyl plank is first grade quality. (Not seconds or clearance/special).
- The vinyl plank has been properly maintained in accordance with our Cleaning & Maintenance Guidelines at all times. These guidelines are available on www.projectfloors.co.nz

Should a manufacturing defect be found, Project Floors will cover the cost of repairing or replacing the vinyl plank in the affected area. The replacement vinyl plank will be of comparable quality and to the nearest available colour from a current range, or alternatively Project Floors will compensate you for the actual replacement cost of the vinyl plank in the affected room or area. Manufacturing defects are defined as any mechanical flaw that occurs during the production of the vinyl plank.

Wear

Project Floors warrants that from the date of the original Installation, when installed and maintained as recommended by Project Floors, the vinyl plank will retain at least 90% of its original surface for up to 15 years.

Warranty Replacement Value (based On Replacement)

Like any asset, the value of your vinyl plank also depreciates over time and with wear. This warranty is pro-rated over a certain number of years, and will terminate after the relevant warranted number of years from the date of original purchase, as below:

1-3 years	100% (full replacement)
4-9 years	60%
10-12 years	30%
13-15 years	10%

Exclusions

- Damage due to the subfloor not being prepared correctly or contaminated with fat, oil, grease, chemicals or moisture.
- Defects caused by incorrect installation or labour costs on any non-professionally installed vinyl
- Labour costs to repair or replace vinyl with visible faults or flaws that were apparent before installation.
- Damage due to the use of an adhesive not recommended by Project Floors Ltd.
- Any accidental damage such as fire, flood or lack of barrier matting at any external entrance and the like.
- Any claim resulting from a manufacturing defect, which is not notified to the Company within six (6) months of installation.
- Damage caused due to improper use or improper maintenance.
- Damage caused by stains, spillages, indentations, excessive heat, cuts, tears, scratches, flooding, pets, accidents, abuse or any natural disaster and/or other abuses that the floor may be subjected to during usage not determined as fair wear and tear. As well as any reduction in the surface gloss due to normal use.
- Damage from athletic equipment, e.g. roller skates, ski boots, golf shoes, rugby boots, etc. or from general roller traffic.
- Damage due to lack of protection under chair legs or roller castor chairs.
- Indentation damage caused by from heavy loading, stiletto heels, excessive surface scratching, and other objects falling on to the floor.
- Damage caused by moving heavy appliances or heavy furniture without adequate protection for the floor.
- Damage caused by the application of improper cleaning or topical agents and methods after the vinyl has been installed or from poor maintenance.
- Damage caused by the use steam mops.
- Damage caused by under floor heating.
- Damage caused by excessive wetting or the persistence of moisture.
- Damage due the use of the floor in an outside or external location.
- Discolouration or stains caused by rugs, rubber or latex products (plasticiser migration).
- Minor colour, shade and/or texture variations from samples or brochures provided.
- Any non-residential, commercial applications or tenanted premises in which the vinyl has been installed.
- Fading and discoloration.
- High temperature areas where the mandatory use of a high-temperature 2-part adhesive was not used as defined in the Company's vinyl plank installation instructions.
- Exceptional traffic and/or high temperature areas where the mandatory use of a pressure sensitive or high-temperature 2-part adhesive was not used as defined in the Company's vinyl plank installation instructions.

What To Do If You Have A Problem With Your Vinyl Planks

All claims must be submitted to the retailer from which you bought the product. The retailer will liaise with the Company on your behalf. If the retailer is no longer in business then you should make your claim directly to the Company in writing, to: Project Floors (NZ) Ltd, PO Box 99, Silverdale, Auckland 0944.

- Claims must be made as soon as they become apparent.
- The Company will require information on the claim, including a copy of the invoice, product detail, installation and subfloor information, samples removed from the installation, photographs and a report of the defect.
- Once a claim is raised the Company will carry out an investigation and satisfying themselves that the problem is their responsibility, will replace any defective material at no charge with the same or similar product. If requested you must send these materials to the Company at your cost.
- The Company will also reimburse a proportionate cost towards labour, uplift and re-installation, providing costs are agreed between the parties before work commences. What To Do If You Have A Problem With Your Vinyl Plank.

If you are not satisfied with the performance of your vinyl plank from Project Floors, you must notify the retailer who sold and installed your vinyl plank.

A representative from Project Floors may also need to make an inspection of the vinyl plank and if necessary take a sample and submit for testing. If viewing or testing confirms that the cause of the defective performance of the vinyl plank is covered under the terms and conditions of the relevant warranty, then Project Floors will replace the warranted vinyl plank in the affected room or area at its expense, including installation costs up to the percentage warranty replacement value as set-out above. The replacement vinyl plank will be of comparable quality and to the nearest available colour or dye batch from a current range, or alternatively Project Floors may at its sole discretion offer to compensate you for a percentage of the actual replacement cost of the vinyl plank in the affected room or area. Replacement will include the cost of installation, materials and freight, but will not include other costs to rectify, e.g. alternative accommodation, removing equipment and furniture, furnishings, partitions and the like or loss of profits.

Your consumer rights remain in effect in addition to these warranties.

1-Component Hybrid Adhesive

UZIN KE 68 T

1-Comp. hybrid adhesive for floor and wall applications

MAIN APPLICATION FIELD:

- ▶ rubber floor coverings in tiles up to 4 mm (e.g. norament®)
- ▶ luxury vinyl tiles or design floors
- ▶ PVC and CV floor coverings in sheets and tiles
- ▶ linoleum in tiles up to 4 mm
- ▶ PVC wall cladding (e.g. Altro Whiterock, Gerflor Decochoc)

SUITABLE ON / FOR:

- ▶ absorbent and non absorbent substrates
- ▶ deformable or elastic substrates (e.g. underlays, wood, please obtain technical advice for metal)

Note: Also suitable for processing on the floor. Obtain technical advice for additional combinations of floor covering and substrates.



PRODUCT BENEFITS/FEATURES:

UZIN KE 68 T is a ready to use and user-friendly 1-comp. hybrid adhesive with very low emissions. The compact adjustment of the adhesive is ideal for floor and wall applications. The adhesive is very resistant against heavy loads, high temperatures (up to 50 degree celsius) or humidity. For interior use.

- ▶ ideal consistency for working on vertical surfaces
- ▶ for installers with PUR or epoxy sensitization
- ▶ for areas with high temperatures
- ▶ suitable for wet area LVT installations, surface water must be removed within 24 h



TECHNICAL DATA:

Packaging	plastic bucket
Pack size	11 kg
Shelf life	min. 12 months
Colour, wet	beige
Colour, dry	beige
Consumption	250 - 2700 g/m ²
Working time	up to 40 minutes*
Minimum application temperature	15 °C at ground level
Loadable	after 24 hours*
Joint sealing	after 24 hours*
Final strength	after 3 - 5 days*

*At 20 °C and 65% relative humidity.



www.blauer-engel.de/1113

SUBSTRATE PREPARATION:

The substrate must be sound, load-bearing, dry, free from cracks and materials (dirt, oil, grease) that would impair adhesion. The surface must be free of dust and as even as possible. Test the substrate in accordance with applicable standard or notices and report any deficiencies.

The datasheets for other used products have to be observed.

APPLICATION:

1. Before use, allow the adhesive to come to room temperature. Pull off the foil cover after opening and remove any surface skin if necessary. Do not mix the skin in.
2. Apply an even coat of adhesive onto the wall using a suitable notched trowel. Do not apply more adhesive than can be laid with good transfer onto the back of the covering within the working time. Press down the covering well.
3. Remove residues while fresh with wipes from the UZIN Clean-Box. Hardened adhesive can only be removed mechanically.

CONSUMPTION INFORMATION:

For the adhesion of Altro Whiterock, Altro Debolon recommends a C2 trowel notch.

CONSUMPTION INFORMATION:

Coating/Backing	Toothing	Consumption approx.*
Smooth or slightly structured, e.g. PVC or LVT	A5	250 - 300 g/m ²
Structured, e.g. rubber	A2	350 - 400 g/m ²
Wood or engineered timber wall cladding	B3	900 - 1000 g/m ²
Rigid PVC wall cladding	C2	2500 - 2700 g/m ²

Observe the technical guidelines of the wall covering manufacturer.

IMPORTANT NOTES:

- ▶ A shelf life of 12 months when stored in moderately cool conditions, in the original packaging. Frost-resistant down to - 25 °C. Carefully and tightly reseal opened containers with the foil and use the contents quickly. Allow containers to come to room temperature before use.
- ▶ Best applied between 18 - 25 °C, with the floor temperature above 15 °C and relative air humidity below 65%. Low temperatures and low air humidity lengthen the working and drying time. Whilst high temperatures and high air humidity shorten the working and drying time.

- ▶ Humid substrates may cause secondary emissions and odours. Therefore, ensure the compound is dry before applying the adhesive.
- ▶ Installations onto substrates with old adhesive residues may cause interactions and lead to unpleasant odours. Ideally these should be removed completely. In all situations adhesive residues must be remedied via the use of primers and coatings of compound at least 3 mm thick.
- ▶ Before installing, the floor covering must be adequately acclimatised to the indoor climate and free from tension.
- ▶ Strong deformation of the roll ends, hanging bays, extremely raised edges or strong curvatures must be weighed down during the adhesion.
- ▶ Please check the adhesive recommendations (online) or obtain application advice when installing chlorine-free floor coverings.
- ▶ Follow the generally acknowledged rules of the trade and technology for the installation of floor covering in respective of the applicable national standards (e.g. EN, DIN, OE, SIA, etc.)
- ▶ For longer term/sustained potential surface water please use UZIN KR 430

SEALS OF QUALITY & ECOLABELS:

- ▶ Solvent-free, containing methoxysilane
- ▶ EMICODE EC 1 PLUS / Very low emission
- ▶ DE-UZ 113 / Environmentally friendly because of low emissions

COMPOSITION:

Silane-terminated prepolymers, mineral fillers, additives.

PROTECTION OF THE WORKPLACE AND THE ENVIRONMENT:

Solvent-free adhesive containing methoxysilane. Non flammable. Avoid contact with eyes and skin. When curing, produces traces of methanol. Ensure good ventilation during application. Wear protective gloves and safety-goggles. After contact with skin wash with plenty of water and soap. In case of contact with eyes, rinse immediately with plenty of water and seek medical advice. Observe safety information on product label as well as safety data sheet. Once cured, has a neutral odour and presents no physiological or ecological risk

DISPOSAL:

Where possible, collect product residues and re-use. Do not allow dispersal into drains, sewers or ground. Empty, scraped and drip-free containers are recyclable. Containers with liquid residue, as well as the liquid product, are classed as Special Waste. Dried product residues are classed as Construction Waste. Therefore collect waste material and allow to harden, then dispose as Construction Waste.

1-Component PU Rapid Primer

UZIN PE 414 BiTurbo

Ready mixed reactive resin primer for flooring coverings including wood flooring

MAIN APPLICATION FIELD:

- ▶ blocking primer on unheated cementitious screeds and concrete up to 4 CM-% / 95% RH with 2 or 3 applied coats.
- ▶ blocking primer on heated constructions up to 2.5 CM-% / 85% RH with 2 or 3 applied coats.
- ▶ for subsequent installations with UZIN reactive resin adhesives

SUITABLE ON / FOR:

- ▶ dense or absorbent substrates, on well-bonded residues of adhesives or compounds (e.g. synthetic resin, neoprene, bitumen or dispersion adhesives residues)
- ▶ moisture sensitive substrates (e.g chip and OSB boards, gypsum and screed boards)
- ▶ new mastic asphalt screeds
- ▶ primed with UZIN PE 280 prior to installation with UZIN cement or calcium sulphate levelling compounds
- ▶ warm water underfloor heating systems
- ▶ exposure to castor wheels in accordance with DIN EN 12 529
- ▶ suitable for residential, commercial and industrial areas



PRODUCT BENEFITS/FEATURES:

UZIN PE 414 BiTurbo is a rapid drying, ready mixed polyurethane primer without plasticizing ingredients which offers a wide field of application. For interior use.

- ▶ easy handling
- ▶ easy application by roller or trowel
- ▶ excellent penetration
- ▶ fast drying
- ▶ moisture barrier up to 4 CM-% / 95% RH



TECHNICAL DATA:

Packaging	plastic canister
Pack Size	12 kg, 6 kg
Shelf Life	min. 9 months
Colour, wet	brown
Colour, dry	brown
Consumption	80 - 150 g/m ² per coat*
Drying Time	see application chart
Minimum Application Temperature	15 °C at ground level

*At 20 °C and 65% relative humidity.



SUBSTRATE PREPARATION:

The substrate must be sound, load-bearing, dry, free from cracks and free from materials (dirt, oil, grease) that would impair adhesion. Cement and calcium sulphate screeds must be abraded and vacuumed. Test the substrate in accordance with applicable standard or notices and report any deficiencies.

Any adhesion-reducing or unstable layers, e.g. release agents, loose adhesives, compounds, covering or paint residues, etc. must be removed, e.g. by brushing, abrading, grinding or shot-blasting. Used, smooth and non-absorbent substrates have to be cleaned intensively with UZIN Basic Cleaner and once dry must have a matt finish. Thoroughly vacuum loose material and dust. Allow the primer to dry completely.

The datasheets for other used products have to be observed.

APPLICATION:

1. Before use, allow containers to come to room temperature and shake well.
2. **For subsequent installation of wood flooring with UZIN reactive resin adhesives on dense or less absorbent substrates:** Apply UZIN PE 414 BiTurbo with the UZIN Nylon Roller. On very smooth and flat calcium sulphate flow screeds or precast screeds its also possible to use a squeegee. Wood flooring has to be installed within 72 hours after application; otherwise grind surface and vacuum if necessary.
3. **For solidification of substrates:** Apply UZIN PE 414 BiTurbo in 1 or 2 thin, non-foaming coats with the UZIN Nylon Roller.
4. **For blocking residual moisture:** Apply UZIN PE 414 BiTurbo in 2 coats with the UZIN Nylon Roller. The second coat can be applied after the first coat is set to foot traffic (after approx. 60 minutes) and needs to dry for min. 1 hour.
5. **For subsequent installation of levelling compounds and flooring adhesives:** Apply UZIN PE 280 on the dry UZIN PE 414 BiTurbo. If a DPM is necessary, applying 2 coats of UZIN PE 414 BiTurbo is necessary.
6. Clean tools with wipes of UZIN Clean Box immediately. Dry material can only be removed mechanically.

APPLICATION CHART:

Foundation / Application	Consumption	Drying Time
Prior to direct installations with UZIN PUR / STP / MSP adhesives	80 - 150 g/m ²	min. 1 hour*
On mastic asphalt, prior to direct installation of wood flooring with UZIN PUR / STP / MSP adhesives	80 - 150 g/m ²	12 hours*
Moisture barrier up to 4 CM-% / 95% RH	250 - 300 g/m ²	1st and 2nd coat: approx. 1 hour*

*At 20 °C and 65% relative humidity.

IMPORTANT NOTES:

- ▶ A shelf life of 9 months when stored in moderately cool conditions, in the original packaging. Carefully and tightly reseal opened containers and use the contents quickly. Allow containers to come to room temperature before use.
- ▶ Best applied between 16 - 25 °C, with the floor temperature above 15 °C and relative air humidity below 65%. High temperatures and high air humidity shorten the drying time. Whilst low temperatures and low air humidity lengthen the drying time.
- ▶ Two coats are required on highly absorbent or old substrates and when used as a barrier against screed odours. Two coats are also required when using as a moisture barrier up to 4 CM% / 95% RH.
- ▶ When used over underfloor heating ensure it has been commissioned and fully tested in accordance with the manufactures guidelines.
- ▶ If installing wooden floors with UZIN reactive resin adhesives directly to the primer this must happen within 72 hours after applying the primer.
- ▶ For screeds constructions in contact with the ground or cementitious screeds with a moisture level higher than 4 CM% / 95% RH, epoxy resins such as UZIN PE 460 or UZIN PE 480, gritted, must be used.
- ▶ Follow the generally acknowledged rules of the trade and technology for the installation of wood flooring and floor covering in respective of the applicable national standards (e.g. EN, DIN, OE, SIA, etc.)

SEALS OF QUALITY & ECOLABELS:

- ▶ Solvent-free
- ▶ EMICODE EC 1 PLUS / Very low emission

COMPOSITION:

Moisture-curing, modified polyurethane prepolymers.

ProjectBond Vinyl Adhesive

PROJECT FLOORS (NZ) LTD INFORMATION SHEET

DESCRIPTION

ProjectBond is a solvent free, low odour, low VOC co-polymer acrylic emulsion adhesive with excellent plasticiser resistance and non-staining properties. It is protected against bio-degradation and withstands normal cleaning practices.

USES:

For bonding plasticised vinyl floor and wall coverings and PVC backed carpets. **ProjectBond** is suitable for bonding vinyl planks and tiles and for most commercial and domestic vinyl sheeting products. It will bond both homogenous and foam backed type vinyls and difficult to hold carpets, to: sound, smooth dry subfloors of concrete; conventional sand/cement screeds or underlayment; plywood; hardboard or cement sheet underlays. Other surfaces, such as Asphalt, granolithic, terrazzo, quarry tiles and concrete surfaces treated with waterproof membranes or some curing agents should be skimmed with a minimum of 3mm of a proprietary cementitious underlayment according to manufacturers recommendations.

PREPARATION:

All phases of the installation should comply with the Australian Standard 1884-1985 - Resilient Sheet & Tiles - Laying & Maintenance Practices.

When adhering to highly absorbent surfaces, the use of one or more coats of clear acrylic primer, such as Polymer 6000, is strongly recommended. Thorough subfloor preparation is essential to the successful installation of all floor and wall coverings. The surface must be clean, structurally sound, dry and free from all contaminants which could inhibit good adhesion - this includes previously used adhesives and floorcoverings, polishes, paint, waterproofing membranes, concrete curing agents and laitence (Laitence being the dusty unstable topping of poorly or insufficiently cured concrete). We recommend the use of a calibrated moisture meter to test concrete substrates prior to laying of impervious floor coverings (only a reading of 75% RH or lower is acceptable). Deep indentations and uneven concrete subfloors should be treated with the appropriate cementitious screed in accordance with manufacturers instructions.

APPLICATION:

Adhesive should be spread evenly with a "V" notched spreader 1.0 - 1.5mm. Apply over an area that can be covered within the open time of

the adhesive. This will vary according to the temperature and humidity prevailing. Allow the adhesive to develop initial tack - generally between 10-15 minutes according to the thickness of bead and temperature/humidity etc. The floorcovering must be placed into wet adhesive film which will allow transfer to the backing and trowel marks to flatten when rolled.

TECHNICAL DATA:

Type:	Cream/White water borne paste
Composition:	Pure Acrylic
Coverage:	Approx. 4-6m ² per litre
Open Time:	Approx. 10 -15 minutes at 20°C
Solids Content:	Approx 70%

CLEAN UP:

Dampened cloth when wet, white spirits when dry. Trowels and other tools may be cleaned with Roberts 900 Cleaner.

PACK SIZE:

20 litres, 15 litres, 10 litres, 4 litres and 2 litres

Material Safety Sheet available on request.

Enquiries should be directed to:

Project Floors (NZ) limited
Auckland
email: salesoffice@projectfloors.co.nz

Disclaimer: Information on this information sheet is, to the best available knowledge of the manufacturer, true and correct. However, owing to the diverse nature of the applications, conditions and materials used, no guarantee either expressed or implied can be given.

SAFETY DATA SHEET

Product: **PROJECTBOND**

Issue Date: 06.02.2023

Page 1 of 3

Not classified as hazardous

SECTION 1. IDENTIFICATION OF THE MATERIAL AND SUPPLIER

Product Name: Projectbond Acrylic Adhesive.
Recommended Use: For adhering a range of vinyl floorcovering materials.
Company Name: Project Floors NZ Ltd.
Address: 55 Barrys Point Road , Takapuna, Auckland, New Zealand.
Phone: Available Monday – Friday , 8.00am – 5.30pm. 09-444 4165
Emergency phone: **New Zealand Poisons Centre: 0800 764 766**

SECTION 2. HAZARDS IDENTIFICATION

Hazard Classification: NON-HAZARDOUS according to NZ legislation
Not Regulated under NZ5433 for land transportation
Chronic Effects: Not applicable.
Risk Phrase/s Not classified as hazardous

SECTION 3. COMPOSITION/INFORMATION ON INGREDIENTS

Composition: Modified acrylic co-polymer emulsion.

Ingredients:	Name	%	CAS No	Hazard Symbol	Risk Phrase
	Additives	90 – 100%	Trade Secret	–	–

SECTION 4. FIRST AID MEASURES

Eye: Immediately irrigate with copious amount of water for at least 15 minutes. Eyelids to be held open. Seek medical advice if effects persist.
Swallowed: Do not induce vomiting. Rinse mouth thoroughly with water immediately. Give plenty of water to drink. Seek immediate medical assistance.
Skin: Wash affected area thoroughly with warm soap water.
Inhaled: Unlikely to be an inhalation risk however provide fresh air and give oxygen or artificial respiration if breathing laboured.

Aggravated medical conditions caused by exposure

Chronic Effects: Not applicable.
Advice to doctor: Treat symptomatically

SECTION 5. FIRE FIGHTING MEASURES

Extinguisher: Foam, Carbon Dioxide, Dry Chemical.
Hazards from Combustion products: Low Hazard
Special precautions for fire fighters: Fire fighters to wear self-contained breathing apparatus if risk of exposure to products of decomposition.
Flammability: Non flammable. Product residue, following evaporation of liquid content will burn in the presence of an ignition source
Fire/Explosion Hazard: n/a
Auto Ignition Temp: n/a
Lower Explosion Limit: n/a
Upper Explosion Limit: n/a
Flash Point: n/a

SAFETY DATA SHEET

Product: **PROJECTBOND**

Issue Date: 06.02.2023

Page 2 of 3

Not classified as hazardous

SECTION 6. ACCIDENTAL RELEASE MEASURES

Emergency

Procedures: Keep spectators away and avoid breathing vapours.

Minor Spills:

Methods and Materials for Containment and Clean up -

Clean up spills immediately. Wear breathing apparatus if in no-ventilated area. Use absorbent clean up materials such as a fire retardant treated sawdust or diatomaceous earth.

Keep spills (and as much as possible cleaning runoff) out of municipal sewers and waterways. Sweep up. Place in separate container for disposal.

Major Spills:

Restrict access to area. No smoking or naked lights. Alert Fire brigade and tell them location and nature of hazard. Clear area of personnel and move upwind. Dike and contain spill with inert materials (e.g. sand) Keep spills (and as much as possible cleaning runoffs) out of municipal sewers, streams, and open bodies of water.

Collect recoverable product into labelled containers for recycling.

SECTION 7. HANDLING AND STORAGE

Precautions for safe

handling:

Avoid damaging containers. Keep lids on containers when not in use.

Storage Temperatures:

Min 0°C

Max 40°C.

SECTION 8. EXPOSURE CONTROLS/PERSONAL PROTECTION

National Exposure Standards:

No exposure standards standard has been established for this product.

Personal

Protection

Eyes:

Safety eyewear with splash guards or side shields to prevent eye contact is recommended when using any adhesives.

Hands/Feet:

Protective clothing. Gloves of neoprene or nitrile rubber are recommended.

Other:

Overalls, protective clothing, barrier cream, eyewash unit, skin cleansing cream.

Practice good caution and personal cleanliness to avoid skin contact. Avoid breathing vapours. Wash hands thoroughly before handling food.



SECTION 9. PHYSICAL AND CHEMICAL PROPERTIES

Appearance:

Cream coloured viscous liquid.

Odour:

Rosin

pH:

8 - 9

Vapor Pressure:

n/a

Vapor Density:

n/a

Boiling Point:

100°C

Melt/Freeze:

0°C

Solubility in water:

Miscible

Specific Gravity:

1.25

VOC:

(Volatile Organic Compound) content: < 50 grams/litre

SAFETY DATA SHEET

Product: **PROJECTBOND**

Issue Date: 06.02.2023

Page 3 of 3

Not classified as hazardous

SECTION 10. STABILITY AND ACTIVITY

Chemical Stability: Product is considered stable under normal storage and handling conditions.
Conditions to avoid: Freezing, excessive heat and fluctuating temperatures.
Incompatible Materials: Strong oxidisers
Hazardous Decomposition Products: Oxides of carbon (CO and CO²).
Hazardous Reactions: None known.

SECTION 11. TOXICOLOGICAL INFORMATION

Inhalation: Practically non-harmful by inhalation. Possible allergic reactions. May cause irritation to the nose and throat. Not normally an inhalation risk due to low vapour pressure at ambient temperatures.
Ingestion: Practically non-harmful. May cause gastric irritation.
Skin: Repeated or prolonged skin contact may lead to irritation.
Eye: A mild eye irritant. May cause watering of eyes.
Chronic Effects: Not applicable

SECTION 12. ECOLOGICAL IDENTIFICATION

Do not allow this product to enter the environment – in particular waterways. No specific data available for this product.

SECTION 13. DISPOSAL CONSIDERATIONS

Consult manufacturer for recycling options and recycle where possible. Dispose of in accordance with local regulations.

SECTION 14. TRANSPORT INFORMATION

UN Number: None allocated
UN Proper Shipping: None allocated
Poison Schedule: Not scheduled
HAZCHEM Code: None allocated

SECTION 15. REGULATORY INFORMATION

Group Standard: Not applicable
Approved Handler: Not required

SECTION 16. OTHER INFORMATION

Contact person/point: In New Zealand: RLA Polymers NZ Ltd. During normal business hours - (09) 267 2772.
Outside normal business hours, contact the Technical Manager (0274) 868 862.
Other information: The information herein is given in good faith, but subject to the Trade Practices Act 1974, no warranty, expressed or implied, is made

Safety data sheets are updated regularly; please ensure that you have a current copy.

The information contained herein is based on data considered accurate and reliable to the best of our knowledge and belief as of the date compiled. No warranty is expressed or implied regarding the accuracy of this data or the results to be obtained from the use hereof. RLA Polymers Ltd assumes no responsibility for personal injury or property damage to vendors, users or third parties caused by this material. Such users or vendors assume all risks associated with the use of this material. It is the users responsibility to satisfy themselves as to the suitability and completeness of the information for their particular use. The users must determine whether the use of the information and data is in accordance with local laws and regulations.

End of SDS

PROJECTFLOORS

@JRP COLLECTION

AUCKLAND DESIGN HUB: 55A BARRYS POINT ROAD, TAKAPUNA, AUCKLAND, 0622
CHRISTCHURCH DESIGN HUB: 41 WELLES STREET, CHRISTCHURCH CENTRAL, 8011
WAREHOUSE: 24A FREMLIN PLACE, AVONDALE, 1026



09 444 4165



salesoffice@projectfloors.co.nz